



DELHI PUBLIC SCHOOL

SAIL TOWNSHIP, RANCHI

ANNUAL EXAMINATION (2024-25)

Class - VIII
Time - 90 Minutes

Subject - Computer Science
Maximum Marks- 25

General Instruction:

All questions are compulsory

1. Fill in the blanks: AI has the power to automate _____ and _____. [1]
2. An AI machines can judge the correctness of data.. (True/False) [1]
3. Seema uses a robot to clean her house. One day, she was feeling very sleepy so she tried to instruct the robot to clean the bedroom first instead of the kitchen. However, the robot ignored her instruction and went inside the kitchen only. Name the ethical issue being signified at this situation. [1]
4. Pick up the odd one out - CiaDoor, Morris worm, Avast, Sunday [1]
5. Which of the following computer malware replicates itself? [1]
 - a) Trojan Horse
 - b) Program File Virus
 - c) Worms
 - d) Spyware
6. Find the output [6 x 1 = 6]
 - a)

```
x=1
while(x<=5):
    x=x+1
print(x)
```
 - b)

```
a=0
for i in range(4,8):
    if i%2==0:
        a=a+i
print(a)
```
 - c)

```
for i in range (20,25,2)
    print(i , end= " ")
```
 - d)

```
a=10
b=60
if (a>20 and b>20):
    print("Hello")
else:
    print("Hi")
```
 - e) If a=10, b=12, find the value of a!=6 and b>5
 - f) If x=10, y=12, find the value of x==9 or y>3

7. Find the errors(Re -write the correct code)

[2 x 1 = 2]

- a) x=10
 if (x>=2) then
 print (x)
- b) j=1
 while j<=10
 print (j)
 j=j+1

8. Write a Python program for the following:

[4 x 3 = 12]

- a) To calculate the factorial of a number.
 - b) To calculate and print the sum of even numbers of first hundred natural numbers.
 - c) Print the odd numbers from 51 to 60.
 - d) Input three numbers and display the largest number (Assuming the numbers are unequal and greater than 0)
 - e) Input three angles and determine if they form a triangle or not (Assuming the angles are greater than 0).
-



DELHI PUBLIC SCHOOL

SAIL TOWNSHIP, RANCHI

ANNUAL EXAMINATION (2024-25)

Class - VIII
Time - 3 Hours

Subject - English
Maximum Marks- 80

General Instructions:

1. The question paper is divided into 3 sections. You can attempt any section first, but complete all the answers of that section and then go to the next section.
2. Don't copy the questions. Only write the answers beside the correct question numbers.
3. Neatness carries marks.

READING (20 Marks)

I. Read the following passage carefully:

(10)

1. First introduced in 1927, the Hardy Boys Mystery Stories are a series of books about the adventures of brothers Frank and Joe Hardy, teenage detectives who solve one baffling mystery after another. The Hardy Boys were so popular among young boys that in 1930 a similar series was created for girls featuring a sixteen-year-old detective named Nancy Drew. The cover of each volume of the Hardy Boys states that the author of the series is Franklin W. Dixon; the Nancy Drew Mystery Stories are supposedly written by Carolyn Keene. Over the years, though, many fans of both series have been surprised to find out that Franklin W Dixon and Caroline Keene are not real people. If Franklin W Dixon and Carolyn Keene never existed, then who wrote the Hardy Boys and Nancy Drew mysteries?
2. The Hardy boys and the Nancy Drew books were written through a process called ghost-writing. A ghostwriter writes a book according to a specific formula. While ghostwriters are paid for writing the books, their authorship is not acknowledged, and their names do not appear on the published books.
3. Ghost writers can write books for children or adults, the content of which is unspecific. Sometimes they work on book series with a lot of individual titles, such as the Hardy Boys and the Nancy Drew series. The initial idea for both the Hardy Boys and the Nancy Drew series was developed by a man named Edward Stratemeyer, who owned a publishing company that specialised in children's books. Stratemeyer noticed the increasing popularity of mystery series among adults, and surmised that children would enjoy reading mysteries about younger detectives with whom they could identify. Stratemeyer first developed each book with an outline describing the plot and setting. Once he completed the outline, stratemeyer then hired a ghostwriter to convert it into a book of slightly over 200 pages. After the ghostwriter had written a draft of a book, he or she would send it back to Stratemeyer, who would make a list of corrections and mail it back to the ghostwriter. The ghostwriter would revise the book according to Stratemeyer's instructions and then return it to him. Once Stratemeyer approved the book, it was ready for publication.
4. Because each series ran for so many years, Nancy Drew and the Hardy Boys both had a number of different ghost writers producing books; however, the first ghostwriter for each series proved

to be the most influential. The initial ghostwriter for Hardy boys was a Canadian journalist named Leslie McFarlane. A few years later, Mildred A Wirt, a young writer from Iowa began writing The Nancy Drew books. Although they were using prepared outlines as guides, both McFarlane and Wirt developed the characters themselves. The personalities of Frank and Joe Hardy and Nancy Drew arose directly from MacFarlane's and Wirt's imaginations. For example, Mildred Wirt had been a star college athlete and gave Nancy similar athletic abilities. The ghostwriters were also responsible for numerous plot and setting details. Leslie McFarlane used elements of small Canadian town to create Bayport, the Hardy Boys fictional hometown.

5. Although The Hardy Boys and The Nancy Drew books were very popular with children, not everyone approved of them. Critics thought their plots were unrealistic and even far-fetched, since most teenagers did not experience the adventures Frank and Joe Hardy or Nancy Drew did. The way the books were written also attracted criticism. Many teachers and librarians objected to the ghostwriting process, claiming it was designed to produce books quickly rather than create quality literature. Some libraries, including the New York Public Library even refused to include the books in their children's collections. Ironically, this decision actually helped sales of the books, because children simply purchased them when they were unavailable in local libraries.

Regardless of the debates about their literary merit, each series of books has exerted an undeniable influence on American and even global culture. Most Americans have never heard of Edward Stratemeyer, Leslie McFarlane or Mildred Wirt, but people throughout the world are familiar with Nancy Drew and Frank and Joe Hardy.

Answer the following questions: -

- (i) Which of the following would be the best title for this passage? (1)
 - (a) Ghostwriting, a way of life
 - (b) Who were Leslie McFarlane and Mildred A Wirt?
 - (c) The Hardy Boys and Nancy Drew: Ghostwriting a series
 - (d) The dubious yet profitable practice of Ghostwriting
- (ii) As used in paragraph 3 which is the best definition of surmised? (1)
 - (a) Guessed
 - (b) Questioned
 - (c) Knew
 - (d) Proved
- (iii) What does a ghostwriter do? Who according to the passage is a real writer? (2)
- (iv) According to the passage, The Hardy Boys and Nancy Drew were created based on the idea that..... (1)
- (v) Who developed the initial idea for both The Hardy Boys and The Nancy Drew series? (1)
- (vi) Why did some writers and librarians object to ghostwriting books? What was the result of not accepting these books in the libraries? (2)
- (vii) Find the antonym of the word 'refuse' in the para - 3. (1)
- (viii) Fill up the gap to best describe the structure of the passage. (1)

Introduction, explanation, history, controversy, _____. (supply only one word)

II. Read the following passage carefully:

(10)

1. In the early 1920s, settlers came to Alaska looking for gold. They travelled by boat to the coastal towns of Seward and Knik, and from there by land into the gold fields. The trail they used to travel inland is known today as the Iditarod Trail, one of the National Historic Trails designed by the Congress of United States. The Iditarod Trail quickly became a major thoroughfare in Alaska, as the mail and supplies were carried across this trail. People also used it to get from place to place, including the priests, ministers, and judges who had to travel between villages. In the winter, the settlers' only means of travel down this trail was via dog sled.
2. Once the gold rush ended, many gold seekers went back to where they had come from and suddenly there was much less travel under Iditarod Trail. The introduction of the aeroplane in the late 1920s meant dog teams were no longer the standard mode of transportation and of course with the aeroplane carrying the mail and supplies, there was less need for land travel in general. The final blow to the use of the dog teams was the appearance of snowmobiles.
3. By the mid 1960s, most Alaskans didn't even know the Iditarod Trail existed, or that dog teams had played a crucial role in Alaska's early settlements. Dorothy G page, a self-made historian, recognised how few people knew about the former use of sled dogs as working animals and about the Iditarod Trail's role in Alaska's colourful history. To raise awareness about this aspect of Alaskan history, she came up with the idea to have a dog sled race over the Iditarod Trail. She presented her idea to an enthusiastic musher, as dog sled drivers are known, Joe Redington, senior. Soon the Page and the Redington were working together to promote the idea of the Iditarod race.
4. Many people work to make the first Iditarod Trail Sled Dog Race a reality in 1967. The Aurora Dog Musher Club, along with men from the Adult Camp in Sutton, helped clear years of overgrowth from the first 9 miles of the Iditarod Trail. To raise interest in the race \$25,000 purse was offered, with Joe Redington donating one acre of his land to help raise the funds. The short race, approximately 27 miles long, was put on a second time in 1969.
5. After these first two successful races, the goal was to lengthen the race a little further to the deserted town of Iditarod by 1973. However in 1972, The US army reopened the trail as a winter exercise, and so in 1973, the decision was made to take the race all the way to the city of Nome--- over 1,000 miles. There were many who believed it could not be done and that it was crazy to send a bunch of mushers out into the vast, uninhabited Alaskan wilderness. But the race went. Twenty two mushers finished that year, and to date over 400 people have completed it.

Answer the following questions: -

- (i) The primary purpose of this passage is to (1)
 - (a) recount the history of Iditarod Trail and the race that memorializes it.
 - (b) describe the obstacles involved in finding the Iditarod Trail.
 - (c) outline the circumstances that led to the establishment of the Iditarod Trail.
 - (d) reestablish the important place of the Iditarod Trail in Alaska's history.
- (ii) Based on the information in the passage, which one of the following did not contribute to the disuse of Iditarod trail? (1)
 - (a) more modern forms of transportation
 - (b) depleted gold mines
 - (c) highway routes to the deserted towns
 - (d) reduce demand for land travel

- (iii) As used in paragraph 2, which is the best definition for the word 'mode'. (1)
- Formula
 - Way
 - Preference
 - Option
- (iv) The Iditarod Trail was designed by _____. (1)
- (v) As used in paragraph 3, the phrase 'self-made historian' implies that Dorothy G Page (1)
- was employed by the state to keep its dog sled history alive
 - was determined to honour the glories of the gold rush in spite of her questionable credentials
 - had pursued the study of Alaska's history out of her own interest
 - had personally educated others about Alaska's history
- (vi) The US Army reopened the Iditarod Trail. (State True/False) (1)
- (vii) When was the first Iditarod Trail Sled Dog Race happened? How many miles were covered? (2)
- (viii) Which are the two organizations who worked hard to bring the race to reality by clearing the roads? (2)

GRAMMAR AND WRITING (20 Marks)

III. Do as directed. (Attempt ANY TEN) (1x10=10)

- (i) My brother _____ (not see) the Red Fort yet. (FIB with the correct form of the verb given in bracket)
- (ii) They ____ (build) a new power station at the moment. (FIB with correct form of the verb)
- (iii) Correct the error in the following sentence.

An one -eyed man was travelling by a bus one day.

Error	Correction

- (iv) Leave on time lest you ____ miss the train. (Choose the correct option)
- (a) should (b) would (c) could (d) must
- (v) The principal said, "Well done ! my boys." (Report in Indirect Speech)
- (vi) Complete the following sentence by using appropriate Adjective Clauses.
- Gone are the days _____.**
- (vii) We all must work hard in order to better our future. (Identify the clause and state its kind)

- (viii) The original constitution of India do not have preamble but it was later on added to the constitution. (Choose the correct option)

Options	Error	Correction
(a)	do	does
(b)	the original	Original
(c)	preamble	the preamble
(d)	Was	is

- (ix) Fire and water _____ (be) good servants but bad masters. (Write the verb form that agrees with the subject)

- (x) Identify the error and rewrite the sentence correctly.

My brother and guide have always supported me in my decisions.

- (xi) Do not scare the pigeons away. (Write this sentence in the passive voice)

- (xii) The shopkeeper said, " What kind of detergent are you looking for ?"
(Report in Indirect Speech)

WRITING (5+5=10 Marks)

IV. Attempt ANY ONE from [A] and [B] given below:-

- A.** Inter House Debate Competition of your school has been postponed due to some unavoidable circumstances. As the secretary of Debating Club, draft a notice to inform the students giving all the details. (Word limit 50-60 words) (5)

OR

- B.** If you could capture one moment in your life when your heart swelled with pride, a moment when your dreams turned into reality and you felt unstoppable, what would it be? Write about it as if you are penning down a cherished page in your diary. (Word limit-80-100) (5)

V. Attempt ANY ONE from [A] and [B] given below:-

- A.** Write a letter to the Editor of The Times of India showing concerns on the increasing addiction for technology among the youth today which is destroying their creativity. You are Navya/ Nevin, an aware citizen. (Word limit-100-120) (5)

OR

- B.** Develop a story with the following beginning lines: (Word limit-120-150) (5)

I pushed the old creaky door open and looked outside. What a sight to behold!!.....

LITERATURE (40 Marks)

VI. Answer the questions with reference to the context (Attempt ANY ONE): (5)

**A. " And thought the air must rush as fresh
To the swallow on the wing;
My spirits flew in feathers then.."**

1. Name the poet and the poem. (1)
2. According to the poet, central idea of the poem is (1)
 - (a) Adulthood brings darkness and gloom along with responsibility
 - (b) Childhood is the best part of man's life.
 - (c) One must recall Childhood memories all the time.
 - (d) Childhood memories play a major role in man's life to get success.
3. According to the poet the childhood memories play a crucial role in man's growing up.
(State True/False) (1)
4. What do you understand by the phrase.. 'My spirit flew in feathers then'? (2)

OR

**B. "Marches he along the plain
To and fro, and scatters wide
From his hands the precious grain;
Muse I, as I see him stride."** (5)

1. Two farming activities in the field are _____ and _____. (1)
2. The poet is thrilled to see the Sower. (State True/False) (1)
3. Write the meaning of 'Muse'. (1)
4. How does the Sower perform his tasks? Can you measure the hopes of the Sower ? (2)

VII. Answer the questions with reference to the context (Attempt ANY ONE):

A. "Miss Bingley offered her the carriage, and she only wanted a little pressing to accept it.." (5)

1. She was not willing to leave the place. (State True /False) (1)
2. Who stopped her from leaving? Did she consent? (1)
3. She was a good human as _____. (1)
4. Who is 'her' referred to here? What was the purpose of her visit? (2)

OR

B. "For me the most important aspect of a song is the words" (5)

1. Who has spoken the above lines? (1)
2. The words are so important in a song because _____. (1)
3. What title was accorded to the person for being so versatile in 2001? (1)
 - (a) Bharat Ratna
 - (b) Dada Shaeb Phalke Award
 - (c) Padma Shree
 - (d) Nightingale of India
4. On 26th January, 1963, this person created history by singing an immortal song. Which song was it? Narrate the incident briefly (2)

VIII. Answer the following questions: (ANY FOUR) (In 30-40 words)

(3×4=12)

- (a) How does the poet imagine life to be in Innisfree?
- (b) How did Bambi get at the butter? What happened after that? Did Bambi learn a lesson?
- (c) Do you think Ranji was a compassionate boy? How can you tell?
- (d) Describe Mr. Lear as given in the poem.
- (e) How did Lata Mangeshkar's father realize that she would make an extra ordinary singer?

IX. Answer ANY TWO of the following in 30-40 words.

(3×2=6)

- (a) What were the strange laws of Athens?
- (b) Who is Puck? Write about him.
- (c) Why was Othello ready to kill Iago?

X. Answer ANY ONE of the following questions in 80-100 words.

(6)

- (A) *'Proper values and ethics can help one become a good person.'* Justify the above statement in light of the poem 'If'.

OR

- (B) The poet has called the sower's gestures '*august*'. How does the sower prove it to be true?

XI. Answer ANY ONE of the following questions in 80-100 words.

(6)

- (A) *William Shakespeare is acknowledged as the greatest writer because he understood human better than anyone else.* Explain the statement in the context of the play "Mid Summer Night's Dream".

OR

- (B) The theme of jealousy plays a central role in Shakespeare's Othello, driving both Iago's manipulation and Othello's downfall. How does jealousy shape the actions and motivations of Iago and Othello, and what does the play suggest about its destructive power?



DELHI PUBLIC SCHOOL

SAIL TOWNSHIP, RANCHI

ANNUAL EXAMINATION (2024-25)

Class - VIII
Time - 90 Minutes

Subject - French
Maximum Marks- 40

1. Unseen passage

Mon projet d'avenir

Émilie : Salut, Marc ! Tu as réfléchi à ce que tu veux faire après le lycée ?

Marc : Oui, j'y ai beaucoup pensé. Je voudrais étudier l'ingénierie à l'université. Et toi ?

Émilie : Moi, je suis intéressée par les langues. J'aimerais devenir traductrice ou professeure de français.

Marc : C'est génial ! Pourquoi les langues ?

Émilie : J'adore voyager et découvrir de nouvelles cultures. Et toi, pourquoi l'ingénierie ?

Marc : J'ai toujours été passionné par les mathématiques et la technologie. Construire des choses, c'est mon rêve !

Émilie : Est-ce que tu sais déjà dans quelle université tu veux aller ?

Marc : Oui, j'ai postulé à l'École Polytechnique. J'espère être accepté. Et toi ?

Émilie : J'envisage de partir à l'étranger, peut-être en Belgique ou au Canada.

Marc : C'est une super idée. Tu as un bon plan pour ton avenir !

Répondez aux questions.

[3]

- Quelle carrière Marc souhaite-t-il poursuivre ?
- Pourquoi Émilie aime-t-elle les langues ?
- Où Marc veut-il étudier ?

Dites vrai ou faux.

[2]

- Marc veut devenir professeur de mathématiques.
- Émilie aime voyager.
- Marc a déjà été accepté à l'université.
- Émilie pense étudier à l'étranger.

2. Corrigez la fautes.

[2½]

- Le beaujolais est un fleuve français.
- Lyon est connue pour son industrie aéronautique.
- Toulouse est connue pour le festival du film.
- Cannes est connue pour son port.
- Le reblochon est un vin français.

3. Répondez.

[2½]

- Qu'est-ce que la Marseillaise ? Qui l'a composée ?
- Que symbolise le coq ?
- De quelle couleur est le drapeau français ?
- Quelle est la devise de la France ?
- Que représente Marianne ?

4. Trouvez la question.

[2½]

1. J'aime les pommes et les pêches.
2. Je préfère la noire.
3. Oui, j'adore les pommes.
4. C'est ma mère.
5. Je préfère le fromage.

5. Mettez les phrases au négatif.

[3]

1. Nicole et moi, nous avons mangé au restaurant hier midi.
2. Pierre a été chanceux à la loterie la semaine dernière.
3. Nous avons eu assez de temps pour finir.
4. J'ai fait tous mes travaux.
5. Ils ont parlé à leurs amis de Québec le mois dernier.
6. Vous avez trouvé un nouvel appartement ?

6. Mettez les phrases à la forme négative.

[2]

1. J'ai écouté la musique toute la matinée.
2. Nous avons travaillé dans le garage.
3. Le soir, ils ont mangé de la soupe à l'oignon.
4. Nous avons visité la ville.

7. Répondez .

[2]

1. Qui est Marie curie ?.....
2. Qui est le symbole de la monarchie absolue?
3. Quel est le symbole de la République française ?.....
4. Qui est Gustave Eiffel ?

8. Complétez les phrases.

[2½]

1. a écrit Le Malade imaginaire.
2. a découvert le radium.
3. a remporté plusieurs batailles contre les Anglais.
4. s'appelle aussi le Roi-Soleil.
5. est le premier président de la Ve République.

9. Mettez les phrases dans l'ordre.

[2½]

1. je / ne / parti / pas / avec / suis / cousins / mes
2. ils / au / joué / ont / n' / foot / pas
3. pas / invité / n' / je / ai / amis / ces
4. allé / au / il / pas / n' / est / restaurant
5. elle / venue / pas / est / au / concert / n'

10. Quels sont vos projets de vacances ? Décrivez en 7-8 lignes.

[5]

11. Conjuguez les verbes au passé récent .

[2½]

1. Je (prendre) mon dîner .
2. Elle (acheter) une nouvelle maison .
3. Vous (regarder) un bon film .
4. Les enfants (manger) des bonbons .
5. Tu (boire) du lait .

12. Mettez les verbes au futur proche .

[2]

1. Ils (finir) les travaux dans un mois .
2. Je (dormir).....dans ma chambre .
3. Elle (partir) en France avec des amis .
4. Nous (se présenter) à quelle heure?

13. Mettez les verbes au futur simple .

[3]

1. Je (dormir) dans des hotels cinq étoiles?
2. Elle (partir)au Maroc avec des amis .
3. Vous (demander) des renseignements en arrivant .
4. Je (visiter) Paris cet été.
5. Nous (aller)au Canada.
6. Ils (faire) aon travail.

14. Transcrivez en anglais.

[3]

1. Je suis allé au français.
2. Tu parle français .
3. Il ya quatre stylo dans sa trousse.
4. Nous sommes regardé télé.
5. Riya et rahul habitent en paris.



DELHI PUBLIC SCHOOL

SAIL TOWNSHIP, RANCHI

ANNUAL EXAMINATION (2024-25)

Class - VIII
Time - 1 Hour

Subject - General Knowledge
Maximum Marks-50

1. Name the only Union territory that is also the capital of two states.
(a) Chandigarh (b) Punjab (c) Daman (d) none
2. They are massive predatory birds having the largest wingspan of around 3m.
(a) Andean Condors (b) Philippine Eagle (c) Lappet Vulture (d) Eurasian
3. It is the national bird of Mexico.
(a) Golden Eagle (b) Himalayan Vulture (c) Talons (d) Eagle
4. Who has been awarded the Nobel prize in literature 2021?
(a) Abdularazak Gurnah (b) Othello (c) Roman (d) Real Madrid
5. She was a member of the British royal family, who was known for her philanthropic work?
(a) Sheryl Sandberg (b) Anousleh Ansari
(c) Princess Diana (d) none
6. She was an engineer and the first woman space tourist to fly to the International space station.
(a) Anousheh Ansari (b) Arundhati Roy
(c) Angela Merkel (d) none
7. Identify the country he belongs to:- "Queen Margrethe II ?
(a) Denmark (b) Spain (c) Sweden (d) Cambodia
8. He is an Indian orchestral conductor and music director for his musical drama.
(a) Zubin Mehta (b) Dabbala Reddy (c) A.R.Rahman (d) none
9. He is an Indian -American who won the 2019 Nobel prize in Economics.
(a) Williams (b) Shehrozeja (c) George (d) Abhijit Banerjee
10. Name, the Spanish physician who was the first to develop the cholera vaccine.
(a) Jaime Ferran (b) Max Theiler (c) Frederick (d) none
11. Tetanus is also known as-
(a) lock jaw (b) open jaw (c) toxin (d) none
12. Tu Youyou received the Nobel prize for her research leading to the findings of the most effective drug for-
(a) malaria (b) jaundice (c) insulin (d) none
13. Which is the largest city in Nagaland?
(a) Kohima (b) Dimapur (c) Phek (d) none

14. Which of these hills are not found in north east India?
 (a) Patkai (b) Lushai (c) Baba Budangirid (d) none
15. Name the Italian sculptor whose most famous works include the bronze statue of David.
 (a) Donatello (b) Madurai (c) Thanjavur (d) none
16. Which Italian artist created the marble sculpture Pieta?
 (a) Michelangelo (b) Jack (c) Henry (d) none
17. is the only swimming sculpture of Leonardo da Vinci.
 (a) Horse and Rider (b) The Motherland calls
 (c) The lions of Delos (d) none
18. Which Indian author's book Sea of Poppies was shortlisted for The Booker prize in 2008?
 (a) Amitav Ghosh (b) Rk Narayan (c) Vijay Tendulkar (d) none
19. He wrote around 250 short stories and 12 novels under the pen name of Munshi Premchand.
 (a) Dhanpat Rai (b) Vikram Seth (c) Ruskin Bond (d) Kiran Desai
20. Who founded YouTube along with Steve Chen and Jawed Karim?
 (a) Evan Spiegel (b) Chad Hurley (c) Ben (d) none
21. He along with Kevin Systrom co-founded Instagram.
 Name him?
 (a) Silberman (b) Mike Krieger (c) Jack Dorsey (d) none
22. It is James Cameron's path breaking idea of the existence of human like aliens.
 (a) Avatar (b) The Jungle Book (c) Gravity (d) none
23. In this 2020 sci-fi film by Christopher Nolan, a secret agent.....
 (a) Ex Machina (b) Tenet (c) Unad Hurley (d) none
24. The Rajput ruler Prithviraj Chauhan defeated Muhammad of Ghur.
 (a) Battle of Plassey (b) Chausa battle
 (c) Second battle of Tarain (d) none
25. Popularly known as D-day, in this invasion, the allied forces liberated France from the Nazi Germany.
 (a) Battle of York Town (b) Talikota battle
 (c) Battle of Buxar (d) Operation Overlord
26. Which country hosted the 13th BRICS summit, virtually in 2021?
 (a) India (b) Algeria (c) Angola (d) none
27. In 1909, Who became the first person to reach the North pole?
 (a) Roald Amundsen (b) Richard Weber (c) Robert Peary (d) none
28. Name the mountain pass through which the world's highest motorable road at 18,600ft in Ladakh passes.
 (a) Kela Pass (b) Khardung La (c) Khunjerab Pass (d) none

29. Reduction in the level of national income and output, accompanied by a fall in the general price level.
 (a) subsidy (b) Deflation (c) Balance sheet (d) none
30. This alternative medicine originated in ancient china. It involves inserting thin needles into specific points in the skin.
 (a) Reiki (b) Acupuncture (c) Unani (d) none
31. This type of therapy involves the use of honey bee products such as honey, pollen and royal jelly.
 (a) Apitherapy (b) Chromotherapy (c) Reflexology (d) none
32. What is the capital of Bangladesh?
 (a) Dhaka (b) Tokyo (c) Kwala (d) none
33. Name the currency of Greece.
 (a) Euro (b) Dinar (c) Yen (d) none
34. From which movie, does this quote belongs to:- "Live for nothing or die for something".
 (a) Gandhi (b) Titanic (c) Dr.No (d) none
35. 'Psycho' movie is related to which quote underneath:-
 (a) "After all, tomorrow is another day" (b) "Show me the money!"
 (c) "I'm king of the world!" (d) none
36. Name the author of the book:- "River of smoke".
 (a) Amitav Ghosh (b) Dainid Dawdar (c) Mark Tully (d) none
37. Who is the first non Indian to receive the Bharat Ratna?
 (a) Nelson Mandela (b) Mother Teresa
 (c) Khan Abdul Gaffar Khan (d) none
38. Electric transformers are used to:-
 (a) serve as fuel (b) regulate current
 (c) change voltage (d) filter current
39. Which team won the inaugural edition of the hockey India league?
 (a) Punjab warriors (b) Delhi wave riders
 (c) Ranchi rhinos (d) none
40. Non -Stick cooking utensils are coated with-
 (a) PVC (b) black paint (c) teflon (d) none
41. Joule is the unit of-
 (a) pressure (b) heat (c) light (d) sound
42. What is the value of $\sin 90$ degree?
 (a) 1 (b) 10 (c) 12 (d) none

43. Who wrote Bande Mataram?

- (a) Rabindranath Tagore
(c) Sharat Chandra

- (b) Bankim Chandra Chatterjee
(d) none

44. A child is standing in a lawn facing southeast direction. If the child turns 152.5 degrees in anticlockwise direction and 62.5 degrees in clockwise direction, which direction will the child face now.

- (a) southeast (b) southwest (c) northeast (d) none

45. Shweta starts walking from her office and walks 150 metres towards the south, then she turns right and walks 80 metres, and then she turns left and walks 60 metres. She finally turns left and walks 280 metres to reach a bank. What is the shortest distance between her office and the bank?

- (a) 280 metre (b) 290 metre (c) 410 metres (d) none

46. What is the name of the international governing body for badminton?

- (a) International Badminton Federation (b) Badminton World Federation
(c) World Badminton Association (d) Olympic Badminton Committee

47. Which country has been chosen to chair the 68th session of the commission on Narcotic Drugs?

- (a) India (b) Algeria (c) Cambodia (d) none

48. Who has been appointed as the new country manager and VICE President for Google India?

- (a) Sanjay Gupta (b) Shantanu Narayen (c) Preeti lobana (d) none

49. In which of the following will India's first air cargo hub be built?

- (a) Kolkata (b) Noida (c) Surat (d) none

50. Which state is the host of the India-UAE joint military exercise.

'Desert cyclone 2024'?

- (a) Gujarat (b) Punjab (c) Rajasthan (d) none



DELHI PUBLIC SCHOOL

SAIL TOWNSHIP, RANCHI

ANNUAL EXAMINATION (2024-25)

Class - VIII
Time - 90 Minutes

Subject - German
Maximum Marks- 40

1. **E-Mail Schreiben! Du bekommst eine Mail von Lukas. Lies die Mail und schreib 5 eine Antwort in ca. 40 Wörter. Schreib die Antwort mit Folgendem Punkte.**

Lieber Ben,

gestern war meine Mutter richtig böse auf mich. Mein Zimmer war sehr unordentlich. Das finde ich nervig. Meine Bücher liegen oft auf dem Tisch oder auch auf dem Stuhl. Meine Kleider hängen auch nicht immer alle im Schrank. Und meine Katze Diva sie liegt oft auf meinem Bett. Das mag meine Mutter überhaupt nicht.

Sie möchte, dass mein Zimmer immer Perfekt aussieht. Total langweilig! Manchmal räumt sie mein Zimmer auf, aber leider nicht immer. Wie ist es bei dir? Ist dein Zimmer immer ordentlich? Wer räumt dein Zimmer auf? Schreib mir bald!

Viele Grüße

Lukas

2. **Neues Jugendzentrum in Walldorf!**

Endlich ist es so weit! Nächste Woche öffnet das neue Jugendzentrum seine Tore!

Ein sicherer Treffpunkt für Jugendliche ab 10 Jahren.

Gemeinsames Spielen (Tischtennis, Billiard...), Musik machen, Sportmöglichkeiten (Fußball, Basketball...) und viel mehr...

Neugierig? Dann schau mal vorbei: Samstag, 19. Mai, 15.00 Uhr. Wo? Das Jugendzentrum liegt direkt im Zentrum, zwischen der Post und dem Stadtmuseum. (Emserstraße 18, Tel: 726309, Email: jugzentr@aol.com) vielleicht hast du sogar Lust, mitzuhelfen und in unserem Organisationsteam mitzuwirken. Also wir erwarten DICH!

Antwort die folgenden Fragen:

1x5=5

- Was passiert am 19. Mai?
 - Ab welchem Alter dürfen Jugendliche das Jugendzentrum besuchen?
 - Welche Freizeitaktivitäten werden im Jugendzentrum angeboten? Nenne zwei Beispiele.
 - Wie kann man Kontakt mit dem Jugendzentrum aufnehmen? Nenne zwei Möglichkeiten.
 - Wo genau befindet sich das Jugendzentrum?
3. ich wohne in Greifswald, einer kleinen Provinzstadt im Norden Deutschland. Ich bin 15 und gehe auf die Realschule. Wir haben hier nur vormittags Schule. Der Nachmittag ist frei, aber ich weiß meistens nicht, was ich in der Freizeit machen kann. Hier in der Provinz ist nie was los. Manchmal fahre ich am Wochenende mit, meiner Clique nach Stralsund oder nach Rockstock. Dort gibt es schöne Diskos. Die gemeinde will ein Jugendzentrum bauen. Das wäre eine gute Idee. Dort könnten

wir uns dann treffen, spielen... und normalerweise gibt es auch verschiedene Kurse, z.b. Instrumentalunterricht, Informatik, Fotografie Kurs usw.

Andrea

1x5=5

Was stimmt? Schreibe richtig oder falsch:

- a. Andrea Tanzt gern.
- b. Andrea hat auch am Nachmittag Schule.
- c. Andrea wohnt in einer Provinzstadt.
- d. Greifswald ist in Süddeutschland.
- e. Dort gibt es schöne Diskos.

4. Ergänze die Verben: (any 5)

1x5=5

Schreiben, schenken, schicken, kaufen, geben, sagen, mitbringen

- a. Stefan, Tina, kommt zu meiner Party. Ich _____ euch eine Einladung.
- b. Vati, kannst du mir bitte eine Geburtstagskarte für die Party _____.
- c. Gina, was _____ du? Eine Geburtstagskarte.
- d. Wir gehen zusammen. _____ mir, um wie viel Uhr wir losfahren.
- e. Ja, klar! Ich _____ meine Gitarre _____. Wir können dann Musik machen.
- f. Peter, ruf mich am Abend an! Ich _____ dir meine Telefonnummer.
- g. Ja, und wir nehmen auch ein Geschenk mit. Wir _____ Brigitte eine Uhr.

5. Stell Fragen:

1x5=5

- a. Im Bioladen.
- b. Hans, Peter und Monika sind in der Stadt.
- c. Nein, du fährst am besten mit dem Taxi.
- d. Nein, ich habe keine Lust.
- e. Der Computer steht auf dem Tisch.

6. Schreibe das Antonym:

0.5x10=5

- a. Ordnung
- b. Billig
- c. Glück
- d. Jugendzentrum
- e. Unglaublich
- f. Weinen
- g. Kaufen
- h. Rechts
- i. Dorf
- j. Leer

7. Ergänze: was passt zusammen.

1x5=5

a. Wer ist ein absoluter Anajo-Fan?	1. Max bekommt die Konzertkarte von seiner Oma.
b. Wo gehen die Freunde am Ende?	2. Die Schwester von Max.
c. Wer sagt: "Komm, Lina! Hopp, hopp!"?	3. Sibel sagt das.
d. Wer bekommt viel Taschengeld?	4. Die Schwester von Max.
e. Wer bekommt die Konzertkarte als Geburtstagsgeschenk?	5. Sie gehen ins Kino.

1x5=5

8. Bausätze:

- Ich/ soll/ mit/ fahren/ Bus/ dem?
- Möchtest/ ihn/ Domplatz/ treffen/ du/ auf dem.
- Habe/ zeit/ keine/ tut/ leid/ mir/ ich.
- Heute/ zu spät/ gekommen/ die Lehrerin/ ist.
- Sie/ zwischen/ Marion/ dem Fenster/und/ sitzt.



DELHI PUBLIC SCHOOL

SAIL TOWNSHIP, RANCHI

ANNUAL EXAMINATION (2024-25)

Class - VIII
Time - 3 Hours

Subject - Hindi
Maximum Marks - 80

सामान्य निर्देश:-

- इस प्रश्नपत्र में चार खण्ड हैं- 'क', 'ख', 'ग' और 'घ'।
- सभी खण्डों के प्रश्नों के उत्तर देना अनिवार्य हैं।
- यथासंभव सभी खण्डों के उत्तर क्रमशः लिखिए।

खण्ड - 'क' (अपठित बोध)

प्रश्न 1 . निम्नलिखित अपठित गद्यांश को ध्यान पूर्वक पढ़कर इसके आधार पर पूछे गए प्रश्नों का उत्तर लिखिए - (2+2+1=5)

आज कुछ छात्र अपने पैरों पर कुल्हाड़ी स्वयं चला रहे हैं। अपने पैरों पर कुल्हाड़ी चलाने का संबंध उन छात्रों से है, जो अपना समय, अपने माता-पिता का पैसा और ज्ञान प्राप्त करने का स्वर्णिम अवसर खो रहे हैं। ऐसे छात्र जो समय, धन और मौका तीनों चीजों से हाथ धो रहे हैं, जीवन में दुखी होने का प्रबंध कर रहे हैं, क्योंकि इन तीनों चीजों का सदुपयोग ही मनुष्य को सुख प्रदान करता है। ऐसे छात्र पढ़ाई को 'हौआ' मान बैठते हैं। जानते हैं, उसका असल कारण क्या है? असल कारण है-पढ़ाई के प्रति अरुचि पैदा होना और भौतिक वस्तुओं, पदार्थों या किसी प्राणी के प्रति अत्यधिक रुचि पैदा होना। जिस कार्य को आप शौक से, पूरी लगन से, करना आरंभ करते हैं, उसमें आप को छोटी या बड़ी सफलता अवश्य मिलती है। जब सफलता मिलनी आरंभ होती है तो रुचि बढ़ने लगती है। जब हम किसी कार्य को अनमने भाव से करते हैं, तो हमें असफलता का ही सामना करना पड़ता है, जिससे अरुचि उत्पन्न होती है। किसी भी छात्र से यह उम्मीद की जाती है कि वह अपने तन, मन, और बुद्धि को सुदृढ़ बनाए और इसके लिए आवश्यक है कि उसकी अध्ययन और खेल दोनों में ही रुचि हो। लेकिन जिन विद्यार्थियों की अध्ययन और खेल दोनों में ही अरुचि है, वे अपने पैरों पर कुल्हाड़ी ही तो चला रहे हैं।

- (1) ऊपर दिए गए अपठित गद्यांश में किस विषय पर चर्चा हो रही है ? (02)
- (2) अनुच्छेद के अनुसार विद्यार्थियों से क्या आशा की गई है ? (02)
- (3) शिक्षा में असफल होने का कारण है- (01)

(क) कार्य को अनमने भाव से करना। (ख) असफल होना। (ग) पढ़ाई में अरुचि की उत्पत्ति। (घ) उपरोक्त सभी।

प्रश्न 2 . निम्नलिखित अपठित गद्यांश को ध्यान पूर्वक पढ़कर इसके आधार पर पूछे गए प्रश्नों का उत्तर लिखिए - (2+2+1=5)

भारतीय संस्कृति का इतिहास बहुत प्राचीन है। इसे जानने से पहले 'संस्कृति' शब्द को समझना आवश्यक है। संस्कृति का सामान्य अर्थ है- मानव जीवन के दैनिक आचार-व्यवहार, रहन-सहन तथा क्रिया-कलाप आदि। वास्तव में संस्कृति का निर्माण एक लंबी परंपरा के बाद होता है। संस्कृति विचार और आचरण के वे नियम और मूल्य हैं जिन्हें कोई समाज अपने अतीत से प्राप्त करता है। इसलिए कहा जा सकता है कि इसे हम अपने अतीत से विरासत के रूप में प्राप्त करते हैं। दूसरे शब्दों में कहें तो संस्कृति एक विशिष्ट जीवन शैली का नाम है। यह एक सामाजिक विरासत है जो परंपरा से चली आ रही होती है। प्रायः सभ्यता और संस्कृति को एक ही मान लिया जाता है, परन्तु इनमें भेद है। सभ्यता में मनुष्य के जीवन का भौतिक पक्ष प्रधान है अर्थात् सभ्यता का अनुमान भौतिक सुख-सुविधाओं से लगाया जा सकता है। इसके विपरीत संस्कृति में आचार और विचार - पक्ष की प्रधानता होती है। इस प्रकार सभ्यता को शरीर माना जा सकता है तथा संस्कृति को आत्मा। इसलिए इन दोनों को अलग-अलग करके नहीं देखा जा सकता। वास्तव में दोनों एक-दूसरे के पूरक हैं।

- (1) भारतीय संस्कृति की क्या विशेषता रही है? (02)
- (2) सभ्यता और संस्कृति में क्या अंतर है? (02)

(3) संस्कृति का निर्माण कब होता है?

(01)

(क) अतिशीघ्र

(ख) एक लंबी परम्परा के बाद

(ग) कभी नहीं

(घ) वर्तमान समय में

खण्ड - 'ख' (पाठ्यपुस्तक एवं पूरक पाठ्यपुस्तक)

प्रश्न 3. नीचे लिखे हुए पठित गद्यांश को पढ़कर निम्नलिखित प्रश्नों के सही उत्तर का चयन कीजिए -

(1X4=4)

मैं और गहराई की खोज में किनारों से दूर गई तो मैंने एक ऐसी वस्तु देखी कि मैं चौंक पड़ी। अब तक समुद्र में अँधेरा था, सूर्य का प्रकाश कुछ ही भीतर तक पहुँच पाता था और बल लगाकर देखने के कारण मेरे नेत्र दुखने लगे थे। मैं सोच रही थी कि यहाँ पर जीवों को कैसे दिखाई पड़ता होगा कि सामने ऐसा जीव दिखाई पड़ा मानो कोई लालटेन लिए घूम रहा हो। यह एक अत्यंत सुंदर मछली थी। इसके शरीर से एक प्रकार की चमक निकलती थी, जो इसे मार्ग दिखलाती थी। इसका प्रकाश देखकर कितनी छोटी-छोटी अनजान मछलियाँ इसके पास आ जाती थीं और यह जब भूखी होती थी तो पेट भर उनका भोजन करती थी। विचित्र है ! "जब मैं और नीचे समुद्र की गहरी तह में पहुँची तो देखा कि वहाँ भी जंगल है। छोटे ठिंगने, मोटे पत्ते वाले पेड़ बहुतायत से उगे हुए हैं। वहाँ पर पहाड़ियाँ हैं, घाटियाँ हैं। इन पहाड़ियों की गुफाओं में नाना प्रकार के जीव रहते हैं जो निपट अँधे तथा महा आलसी हैं।

(1) अब तक समुद्र में प्रकाश की स्थिति क्या थी ?

(01)

(क) अब तक समुद्र में सूर्य का प्रकाश था।

(ख) सूर्य का प्रकाश कुछ ही भीतर तक पहुँच पाता था।

(ग) कुछ जगह समुद्र में अँधेरा था तथा कुछ जगह प्रकाश था।

(घ) समुद्र में सब जगह घोर अँधेरा था।

(2) बूँद ने ऐसी क्या चीज देखी थी, जिसे देखकर बूँद चौंक पड़ी ?

(01)

(क) एक साँप देखा था।

(ख) एक बड़ी चट्टान देखी थी।

(ग) दूर से आता जलयान देखा था।

(घ) बूँद को एक ऐसा जीव दिखाई दिया जो मानो लालटेन लिये घूम रहा हो।

(3) इस प्रकाश वाली मछली की क्या विशेषता थी ?

(01)

(क) शरीर से एक प्रकार की चमक निकलती थी, जो इसे मार्ग दिखलाती थी।

(ख) यह बहुत तेज तैरती थी।

(ग) यह तैर नहीं सकती थी।

(घ) समुद्र में उजाला करने में सहायक थी।

(4) समुद्र की तह में जाकर बूँद ने क्या देखा?

(01)

(क) मनुष्य

(ख) जंगल

(ग) आसमान

(घ) तारे

प्रश्न 04. नीचे लिखे हुए पठित पद्यांश को पढ़कर निम्नलिखित प्रश्नों के सही उत्तर का चयन कीजिए -

(1X4=4)

कछु भाभी हमको दियो, सो तुम काहे न देत।

चाँपि पोटरी काँख में, रहे कहो केहि हेतु॥

आगे चना गुरुमातु दए ते, लए तुम चाबि हमें नहि दीने।

स्याम कह्याउ मुसकाय सुदामा सों, "चोरी की बान में हौं जू प्रवीने॥

पोटरी काँख में चाँपि रहे तुम, खोलत नहि सुधा रस भीने।

पाछिलि बानि अजौ न तजो तुम, तैसई भाभी के तंदुल कीन्हें॥"

(1) सुदामा को खाने के लिए चने किसने दिए थे ?

(01)

(क) माता

(ख) गुरुमाता

(ग) पिता

(घ) भाई

(2) 'सुधा रसभीने' का अर्थ है -

(01)

(क) जल से भींगा हुआ

(ख) शहद से भींगा हुआ

(ग) अमृत से भींगा हुआ

(घ) पसीने से भींगा हुआ

- (3) सुदामा ने चावल को कहाँ छिपा कर रखा था? (01)
 (क) काँख में (ख) पीठ में (ग) झोले में (घ) घर पर
 (4) सुदामा को उलाहना कौन दे रहा है? (01)
 (क) श्री कृष्ण (ख) पिता (ग) गुरुमाता (घ) भाई

प्रश्न 05 . निम्नलिखित अति लघु उत्तरीय प्रश्नों के उत्तर दीजिए-

(01X05=05)

- (1) इंजन के स्टार्ट होने पर बस के यात्रियों की क्या दशा हो रही थी? (01)
 (2) कवि अपने हृदय पर किसका भार लिए फिरता है? (01)
 (3) पक्षी और बादल द्वारा लाई गई चिट्ठियों को कौन-कौन पढ़ पाते हैं? (01)
 (4) अभी भी एक बस अंतरिक्ष के पार की दुनिया से कौन-सी खबर लाएगी? (01)
 (5) 'साइकिल आंदोलन' से जुड़ी घटना किस राज्य से संबंधित है? (01)

प्रश्न 06. निम्नलिखित लघु उत्तरीय प्रश्नों के उत्तर दीजिए-

(02X05=10)

- (1) लेखक लम्बी अवधि तक अपने मामा के गाँव क्यों नहीं जा सका ? (02)
 (2) दोषों का पर्दाफाश करना कब बुरा रूप ले सकता है? (02)
 (3) सुदामा की दीन-हीन अवस्था का वर्णन अपने शब्दों में कीजिए। (02)
 (4) उस दिन रात्रि में बिलवासी जी को देर तक नींद क्यों नहीं आई? (02)
 (5) 'साइकिल आंदोलन' से पुडुकोट्टई की महिलाओं के जीवन में कौन-कौन से दो बदलाव आए हैं? (02)

प्रश्न 07. निम्नलिखित दीर्घ उत्तरीय प्रश्नों के उत्तर दीजिए-

(03X02=06)

- (1) घायल होने के बाद भी बाज ने यह क्यों कहा, "मुझे कोई शिकायत नहीं है।" विचार प्रकट कीजिए। (03)
 (2) मनुष्य के व्यवहार में ही दूसरों को विरोधी बना लेने वाले दोष होते हैं। कबीर के दोहे के आधार पर स्पष्ट कीजिए। (03)

प्रश्न 08. निर्देशानुसार छः प्रश्नों में से किन्हीं पाँच प्रश्नों के उत्तर दीजिए-

(02X05=10)

- (1) अहमदनगर किले में नेहरू जी ने अपना शौक पूरा करने के लिए क्या किया ? (02)
 (2) नेहरू जी ने मध्यम वर्ग की क्या विशेषताएँ बताई हैं ? (02)
 (3) महाभारत की रचना विषय की श्रेष्ठतम रचनाओं में क्यों की जाती है ?
 (4) बुद्ध के चार आर्य सत्य कौन-कौन हैं ? (02)
 (5) बुद्ध ने अपने शिष्यों को सन्देश में क्या कहा ? (02)
 (6) सन 1942 के आन्दोलन में युवा पीढ़ी की क्या भूमिका थी ?

खण्ड - 'ग' (व्यावहारिक व्याकरण)

प्रश्न 09. (क) निम्नलिखित वाक्यों में कारक की पहचान कीजिए-

(01X02=02)

- (i) विद्यार्थी गुरुकुल में पढ़ते थे (ii) घुड़सवार घोड़े से गिर पड़ा

(ख) निम्नलिखित शब्द के दो-दो पर्यायवाची शब्द लिखिए -

(01X02=02)

- (i) उन्नति (ii) उत्तम

(ग) निम्नलिखित वाक्यांश के लिए एक शब्द लिखिए -

(01X02=02)

- (i) जहाँ पर जाना कठिन हो। (ii) शरीर को पुष्ट बनाने वाला।

(घ) निम्नलिखित मुहावरों का वाक्य प्रयोग कीजिए-

(01X02=02)

- (i) आसमान टूट पड़ना। (ii) एक आँख से देखना।

(ङ) निम्नलिखित प्रत्यय से निर्मित नए शब्द बनाकर लिखिए -

(01X02=02)

- (i) औना (ii) अक्कड़

प्रश्न 10

- (क) भारतीय सविधान में कुल कितनी भाषाओं को मान्यता प्राप्त है? (01)
- (ख) निम्नलिखित में से किसी एक शब्द का विलोम शब्द लिखिए - (01)
आज्ञा अथवा कनिष्ठ
- (ग) निम्नलिखित शब्दों में उचित स्थान पर अनुस्वार/अनुनासिक का प्रयोग कीजिए- (1/2+ 1/2=01)
(i) सन्यासी (ii) अधेरा
- (घ) निम्नलिखित शब्दों में उपसर्ग की पहचान करके लिखिए- (1/2+ 1/2=01)
(i) अधपका (ii) भरपेट
- (ङ) निम्नलिखित शब्दों में रचना के आधार योगरूढ़ शब्द को पहचान कर लिखिए- (1/2+ 1/2=01)
(i) पंकज (ii) घोड़ा (iii) लम्बोदर
- (च) निम्नलिखित वाक्यों में क्रिया विशेषण की पहचान करके लिखिए- (1/2+ 1/2=01)
(i) राहुल ज़ोर-ज़ोर से हँसता है (ii) किसान सुबह से खेत जोत रहा है
- (छ) निम्नलिखित वाक्यों उचित स्थान पर विराम चिह्न का प्रयोग करके लिखिए- (1/2+ 1/2=01)
(i) पिताजी ने कहा कभी पढ़ भी लिया करो (ii) वाह बहुत ही सुंदर दृश्य है
- (ज) निम्नलिखित शब्दों के लिंग परिवर्तन करके लिखिए- (1/2+ 1/2=01)
(i) विदुषी (ii) कवि

खण्ड - 'घ' (रचनात्मक लेखन)

- प्रश्न 11. निम्नलिखित में से किसी एक पर विज्ञापन तैयार कीजिए- (3X1=3)
(i) दंत मंजन (ii) स्वच्छता अभियान

- प्रश्न 12. निम्नलिखित में से किसी एक पर लगभग 100 शब्दों में पत्र लिखिए - (5X1=5)
आप अंकित/अंकिता छात्रावास में रहकर पढ़ाई कर रहे/रहीं हैं। अपने पिता जी से कुछ अतिरिक्त पुस्तकें खरीदने के लिए 2000 रुपये की आवश्यकता हेतु पत्र लिखें।

अथवा

‘एक अच्छा मित्र एक पुस्तकालय के बराबर होता है।’ अपने मित्र/सखी को अच्छी संगति का महत्त्व बताते हुए पत्र लिखें।

- प्रश्न 13. निम्नलिखित में से किसी एक शीर्षक पर दिए गए संकेत बिन्दुओं के आधार पर 120 शब्दों में अनुच्छेद लिखिए - (5X1=5)

(1) मोबाइल फोन

संकेत बिंदु:

- आवश्यक अंग
- ढेरों सुविधाएँ
- दूसरों के लिए खतरा
- सही रूप में प्रयोग आवश्यक।

(2) विद्यार्थी के दायित्व

संकेत बिंदु:

- विद्यार्थी का जीवन
- विद्यार्थी : जीवन की नींव
- देश और समाज के आधार हैं।

(3) प्लास्टिक प्रदूषण

संकेत बिंदु:

- प्लास्टिक की दुनिया
- सही और गलत प्रयोग
- पर्यावरण पर प्रभाव
- रोकथाम के उपाय।



DELHI PUBLIC SCHOOL

SAIL TOWNSHIP, RANCHI

ANNUAL EXAMINATION (2024-25)

Class - VIII
Time - 1 Hour

Subject - HPE
Maximum Marks- 25

General Instructions:-

1. This question paper consists of 25 objective questions.
 2. All questions are compulsory.
 3. All questions carrying one mark each ($1 \times 25 = 25$)
-

1. What is the Length and Breadth of Badminton court for singles?
 - (a) 44 feet x 15 feet
 - (b) 44 feet x 17 feet
 - (c) 42 feet x 17 feet
 - (d) 42 feet x 16 feet
2. What is the height of Badminton poles from the floor?
 - (a) 1.52 Mt.
 - (b) 1.51 Mt.
 - (c) 1.55 Mt.
 - (d) 1.54 Mt.
3. How many feathers are in a shuttlecock?
 - (a) 14 to 16
 - (b) 11 to 12
 - (c) 17 to 18
 - (d) 12 to 13
4. What is the dimension of mesh in Badminton net?
 - (a) 10 mm to 14 mm
 - (b) 11 mm to 12 mm
 - (c) 15 mm to 20 mm
 - (d) 13 mm to 14 mm
5. What is the term used for a shot, hit with a steep downward trajectory?
 - (a) Drop
 - (b) Clear
 - (c) Drive
 - (d) Smash
6. What is the name of the prestigious Badminton tournament held in England?
 - (a) French open
 - (b) Denmark open
 - (c) Indonesia open
 - (d) All England open Badminton championship

7. What is the term used for a service that land short of the service line?
- (a) Fault
 - (b) Let
 - (c) Clear
 - (d) Drive
8. What is the another name of game Badminton?
- (a) Poona
 - (b) Hu - Tu - Tu
 - (c) Ha - do - do
 - (d) Chhoyan - Chhoyin
9. How many players are on a court during a badminton singles match in one team?
- (a) 1
 - (b) 2
 - (c) 3
 - (d) 4
10. What is the name of the International governing body for Badminton?
- (a) International Badminton Federation (IBF)
 - (b) Badminton world Federation (BWF)
 - (c) World Badminton Association (WBA)
 - (d) Olympic Badminton Committee (OBC)
11. Badminton association of India (BAI) was formed in which year?
- (a) 1942
 - (b) 1940
 - (c) 1938
 - (d) 1934
12. Who won India's First Olympic medal in Badminton?
- (a) Prakash Padukone
 - (b) P. Gopichand
 - (c) Saina Nehwal
 - (d) Kidambi Srikanth
13. UBER CUP is Associated with which sports?
- (a) Cricket
 - (b) Badminton
 - (c) Hockey
 - (d) Football
14. Which has the greater length: court for doubles or court for singles in Badminton?
- (a) Doubles
 - (b) Singles
 - (c) Same length
 - (d) None of the above

15. What can be the maximum number of games in a Badminton match at International level?
- (a) 3
 - (b) 4
 - (c) 6
 - (d) 7
16. Thomas Cup is associated with which sport?
- (a) Tennis
 - (b) Badminton
 - (c) Volleyball
 - (d) Football
17. Which country will host the Common Wealth Games 2026?
- (a) England
 - (b) Australia
 - (c) Scotland
 - (d) Northern Ireland
18. Which Country has hoisted the Kho -Kho world Cup 2025?
- (a) Australia
 - (b) South Africa
 - (c) United Kingdom
 - (d) India
19. Which Country will host the men's Asia cup Cricket tournament 2025?
- (a) Pakistan
 - (b) Sri Lanka
 - (c) India
 - (d) Bangladesh
20. Which state has won the 33rd Santosh Trophy title in 2024?
- (a) Tamil Nadu
 - (b) West Bengal
 - (c) Punjab
 - (d) Maharashtra
21. Where is the headquarter of Badminton World Federation (BWF)?
- (a) Shanghai
 - (b) Kuala Lumpur
 - (c) Tokyo
 - (d) Copenhagen
22. Men's Hockey 2024-25 India league has been held in which state?
- (a) Rourkela
 - (b) Bhubaneswar
 - (c) Mumbai
 - (d) Delhi

23. For the first time, which state will host the 33rd National games 2025?

- (a) Haryana
- (b) Punjab
- (c) Himachal Pradesh
- (d) Uttarakhand

24. Which City will host the Para Athletics World Championship 2025?

- (a) New Delhi
- (b) Mumbai
- (c) Bengaluru
- (d) Chennai

25. Who was the brand Ambassador for the inauguration of Kho - Kho World Cup 2025?

- (a) Amitabh Bachchan
 - (b) Salman Khan & Tiger Shroff
 - (c) ShahRukh Khan
 - (d) Akshay Kumar
-



DELHI PUBLIC SCHOOL

SAIL TOWNSHIP, RANCHI

ANNUAL EXAMINATION (2024-25)

Class - VIII
Time - 90 Minutes

Subject - Japanese
Maximum Marks- 40

1. Read the following conversation and answer the given questions in Japanese.

[5]

- ひらべえ： あ、たかのさん。ちょっとおねがいがあるのですが。
- ひらべえ： ここにかいていることがよくわかりません。せつめいしてくれませんか？
- たかの： はい、いいですよ。えっと、ほんのへんきやくきげんについてかいてあります。ひらべえ、としょかんでほんをかりましたか？
- ひらべえ： はい、1しゅうかんまえにかりました。
- たかの： としよかんがこうじのため、らいしゅうの火よう日から金よう日まできゅうかんです。なので、らいしゅうの月よう日までに本をかえしてほしいとかいています。
- ひらべえ： らいしゅうの月よう日までですか？今日が金よう日なので、いそいでよまないといけませんね。
- たかの： ちなみにどんな本をかりたんですか？
- ひらべえ： にほんのむかしばなしです。ももたろうというはなしです。
- たかの： またこんどよんだかんそうをきかせてくださいね。

- 1) ひらべえは、たかのさんになんとおねがいしていますか？
- 2) としよかんはいつからいつまで、きゅうかんですか？
- 3) ひらべえは、いつまでに本をかえさないといけませんか？
- 4) ひらべえは、なんというなまえのほんをかりましたか？
- 5) (4)でこたえたほんのないようについて、あてはまるものをえらびましょう。

- a) にほんのゆうめいなじしょ
- b) インドのゆうめいなじしょ
- c) にほんのゆうめいなむかしばなし
- d) インドのゆうめいなむかしばなし

2. Write the reading and meaning of the underlined Kanji.

[3]

- 1) 木の上にねこがいます。
- 2) かばんの中に本があります。
- 3) ドアの前にスペースがあります。
- 4) かいだんの下にゴミばこがありません。
- 5) バイクの横にバスがあります。
- 6) ソファの左にいぬがねています。

3. Rearrange the following jumbled words to make meaningful sentences.

[5]

- 1) せんせい／あたらしい／おもいますか／ついて／どう／に／？
- 2) ともだちは／あした／の／とおもいます／に／こない／パーティー／。
- 3) えいが／を／いって／えいがかん／に／みました／。
- 4) のった／は／しんかんせん／に／わたし／こと／が／ありません／。
- 5) わたし／は／できます／が／はなす／こと／を／に／ほんご／。

4. Change the following sentences into polite form.

[2]

- 1) きょうは10じにねる。
- 2) しゅくだいをしたあとにえいがをみる。
- 3) あさごはんをたべた。
- 4) あしたはなんじにおきる？

5. Answer the following questions in Japanese.

[3]

- 1) おとうさんからプレゼントをもらったときなんといいいますか？
- 2) ともだちからペンをかりたいときなんといいいますか？
- 3) かんじのよみかたがわからないとき、せんせいになんといいいいますか？

6. Make sentences with any three of the following words in Japanese.

[3]

- 1) ニュース
- 2) カレー
- 3) スマートフォン
- 4) ケーキ

7. Complete the following sentences based on the hint given in brackets.

[3]

- 1) ともだちに本を_____あげました。 (かします)
- 2) むすこにおもちゃを_____あげるつもりです。 (かいます)
- 3) えいごのテストのために_____といけません。 (べんきょうします)
- 4) きょうははやくいえに_____といけません。 (かえります)
- 5) このかんじのかきかたを_____あげます。 (おしえる)
- 6) からいものを_____ないほうがいいです。 (たべます)

8. Translate any three of the following sentences in Japanese.

[5]

- 1) This coffee is tasty.
- 2) This chai seems tasty.
- 3) There seems to be a dog under the table.
- 4) Kanji seems to be difficult.
- 5) There were many people in the party.

9. Change the following sentences into negative form.

[3]

- 1) ここでおんがくをきいてください。
- 2) まどをしめてください。
- 3) このばしょでは、はしってください。
- 4) ここにすわってください。
- 5) ここでおべんとうをたべます。
- 6) でんわをします。

10. Write the opposite word for any three of the following i-adjectives in Japanese.

[3]

- 1) たかい
- 2) ふるい
- 3) むずかしい
- 4) あつい

11. Change the following sentences into 「～たほうがいいです」 form.

[3]

- 1) すこしやすんでください。
- 2) アイスクリームをたべます。
- 3) まいにちうんどうします。
- 4) 日よう日はこうえんにいきます。
- 5) ごはんのあとにおみずをのみます。
- 6) ゆっくりはなしてください。

12. Complete the following verb conjugation table.

[2]

Dictionary Form(Plain)	～masu form (Polite)	～ta form(Plain)	～ta form(Polite)
	行く		
			来ました



DELHI PUBLIC SCHOOL

SAIL TOWNSHIP, RANCHI

ANNUAL EXAMINATION (2024-25)

Class - VIII
Time - 3 Hours

Subject - Mathematics
Maximum Marks- 80

All questions are compulsory. Write the units wherever needed. Omission of steps results in deduction of marks.

General instructions:

1. This question paper contains –Five sections **A,B,C,D and E**. Each section is compulsory. However, there are internal choices in some questions.
2. **Section-A** has 18 MCQ's and 02 Assertion-Reason based questions of 1 mark each.
3. **Section-B** has 5 Very Short (VSA)-type questions of 2 marks each.
4. **Section-C** has 6 Short Answer (SA)-type questions of 3 marks each.
5. **Section-D** has 4 long Answer (LA)-type questions of 5 marks each.
6. **Section-E** has 3 case study based assessment of 4 marks each with sub-parts.
7. Draw neat figures wherever required. Do rough work in the right margin neatly.

SECTION – A (1 mark each)

1. The multiplicative inverse of $-1\frac{1}{7}$ is :
(a) $\frac{8}{7}$ (b) $-\frac{8}{7}$ (c) $\frac{8}{-7}$ (d) $\frac{7}{-8}$
2. Between two given rational numbers, we can find :
(a) One and only one rational number. (b) Only two rational numbers .
(c) Only ten rational numbers (d) infinitely many rational numbers.
3. If m is the cube root of n , then n is :
(a) m^3 (b) \sqrt{m} (c) $\frac{m}{3}$ (d) $\sqrt[3]{m}$
4. The value of x for which the expressions $3x - 4$ and $2x + 1$ become equal is :
(a) -3 (b) 0 (c) 5 (d) 1
5. The probability of choosing a vowel from the collection of alphabets is :
(a) $\frac{21}{26}$ (b) $\frac{5}{26}$ (c) $\frac{1}{26}$ (d) $\frac{3}{26}$
6. If 90% of x is 315 km, then the value of x is :
(a) 325 km (b) 350 km (c) 350 m (d) 325 m
7. Which of the following is not equal to $\left(\frac{-3}{4}\right)^{-3}$?
(a) $\left(\frac{3}{4}\right)^{-3}$ (b) $-\left(\frac{3}{4}\right)^{-3}$ (c) $-\left(\frac{4}{3}\right)^3$ (d) $\left(-\frac{4}{3}\right)^3$
8. If y be any non-zero integer, then (y^0) is equal to :
(a) 1 (b) 0 (c) y (d) Not defined.
9. A metal sheet 27cm long, 8cm broad and 1cm thick is melted into a cube. The side of the cube is :
(a) 6 cm (b) 8 cm (c) 12 cm (d) 24 cm

10. If the height of a cylinder becomes $\frac{1}{4}$ of the original height and the radius is doubled, then which of the following will be true ?
- curved surface area of the cylinder will be doubled.
 - curved surface area of the cylinder will remain unchanged.
 - curved surface area of the cylinder will be halved.
 - curved surface area will be $\frac{1}{4}$ of the original curved surface area.
11. If we subtract $-3x^2y^2$ from x^2y^2 then we get,
- $-4x^2y^2$
 - $-2x^2y^2$
 - $2x^2y^2$
 - $4x^2y^2$
12. Sum of $a - b + ab$, $b + c - bc$ and $c - a - ac$ is :
- $2c + ab - ac - bc$
 - $2c - ab - ac - bc$
 - $2c + ab + ac + bc$
 - $2c - ab + ac + bc$
13. The factorised form of $p^2 - 17p - 38$ is :
- $(p - 19)(p + 2)$
 - $(p - 19)(p - 2)$
 - $(p + 19)(p + 2)$
 - $(p + 19)(p - 2)$
14. The factors of $x^2 - 4$ are :
- $(x - 2), (x - 2)$
 - $(x + 2), (x - 2)$
 - $(x + 2), (x + 2)$
 - $(x - 4), (x - 4)$
15. Both 'u' and 'v' vary directly with each other, when u is 10, v is 15, which of the following is not a possible pair of corresponding values of u and v ?
- 2 and 3
 - 8 and 12
 - 15 and 20
 - 27 and 40.5
16. A truck needs 54 litres of diesel for covering a distance of 297 km. The diesel required by the truck to cover a distance of 550 km is :
- 100 l
 - 50 l
 - 25.16 l
 - 25 l
17. A point which lies on both the axis is :
- (0, 0)
 - (0, 1)
 - (1, 0)
 - (1, 1)
18. Every point on the x-axis is of the form :
- (0, y)
 - (x, 0)
 - (x, y)
 - (x, 1)

ASSERTION – REASON BASED QUESTIONS

19. In the following question, Assertion (A) is followed by Reason (R). Choose the correct answer out of the following choices.

Assertion (A) - The four angles of a quadrilateral are in the ratio of 3:5:7:9 then the smallest angle is 45° .

Reason (R) - The sum of the angles of a quadrilateral is 360° or 4 right angles

- Both A and R are true and R is the correct explanation of A
- Both A and R are true but R is not the correct explanation of A
- A is true but R is false
- A is false but R is true.

20. In the following question, Assertion (A) is followed by Reason (R). choose the correct answer out of the following choices.

Assertion (A) - The number of digits in the square root of 4937284 is four.

Reason (R) - If the number of digits in a square number is n , then the number of digits in its square root is $\frac{n}{2}$, if n is even and $\frac{n+1}{2}$, if n is odd.

- (a) Both A and R are true and R is the correct explanation of A
- (b) Both A and R are true but R is not the correct explanation of A
- (c) A is true but R is false
- (d) A is false but R is true.

SECTION – B (2 marks each)

21. Solve $\frac{x}{2} + \frac{x}{4} + \frac{x}{5} + 10000 = x$
22. A number is increased by 20% and then it is decreased by 20% . Find the net increase or decrease percent.
23. 160 m^3 of water is to be used to irrigate a rectangular field whose length is 20 m and breadth is twice its length. What will be the height of the water level in the field.
24. Evaluate using suitable identities 497×505

OR

24. Using suitable identity, evaluate $x^2 + \frac{1}{x^2}$, if $x + \frac{1}{x} = 5$.
25. Factorize : $a^4 - (a - b)^4$

OR

25. Factorise : $a^2 + 7b + ab + 7a$.

SECTION – C (3 marks each)

26. Write a pythagorean triplet whose smallest number is 12.
27. Using prime factorisation, find the cube root of 5832.
28. Find x so that $\frac{7^x}{7^{3x}} = \frac{1}{2401}$.

29. Simplify : $\frac{25 \times t^{-4}}{5^{-3} \times 10 \times t^{-8}}$ where $(t \neq 0)$

OR

29. Simplify : $\frac{3^{-5} \times 10^{-5} \times 125}{5^{-7} \times 6^{-5} \times 5^{10}}$

30. Subtract $3a(a + b + c) - 2b(a - b + c)$ from $4c(-a + b + c)$

OR

30. Simplify : $(1.5x - 4y)(1.5x + 4y + 3) - 4.5x + 12y$
31. A train is moving at a uniform speed of 75 km/hour.
- (i) How far will it travel in 20 minutes?
 - (ii) Find the time required to cover a distance of 250 km.

SECTION – D (5 marks each)

32. There are 100 students in a hostel. Food provision for them is for 20 days. How long will these provision last if 25 more students join the group ?

OR

32. Under the condition that the temperature remains constant, the volume of gas is inverely proportional to its pressure. If the volume of gas is 630 cubic centimeters at a pressure of 360 mm of mercury, then what will be the pressure of the gas if its volume is 720 cubic centimeters at the same temperature.
33. Factorise the expression and divide them $15(y+3)(y^2-16) \div 5(y^2-y-12)$.
34. Name the property used in each of the following :-

(a) $\frac{-7}{11} \times \frac{-3}{5} = \frac{-3}{5} \times \frac{-7}{11}$

(b) $\frac{-2}{3} \times \left[\frac{3}{4} + \frac{-1}{2} \right] = \left[\frac{-2}{3} \times \frac{3}{4} \right] + \left[\frac{-2}{3} \times \frac{-1}{2} \right]$

(c) $\frac{1}{3} + \left[\frac{4}{9} + \left(\frac{-4}{3} \right) \right] = \left[\frac{1}{3} + \frac{4}{9} \right] + \left[\frac{-4}{3} \right]$

(d) $\frac{-2}{7} + 0 = 0 + \left(\frac{-2}{7} \right) = \frac{-2}{7}$

(e) $\frac{3}{8} \times 1 = 1 \times \frac{3}{8} = \frac{3}{8}$

35. Draw a pie chart for the given data :

<u>Favourite Food</u>	<u>Number of People</u>
North Indian	30
South Indian	40
Chinese	25
Others	25

OR

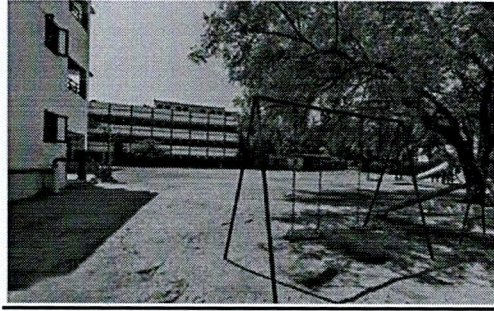
35. On a particular day, the sales (in rupees) of different items of a baker's shop are given below :

Ordinary bread	-	320
Fruit bread	-	80
Cakes & Pastries	-	160
Biscuits	-	120
Others	-	40

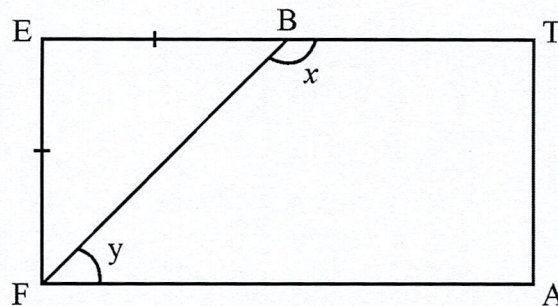
Draw a pie chart for this data.

SECTION – E (4 x 3 = 12)

Case Study Based Questions



36. A playground is in the form of a rectangle ATEF. Two players are standing at the points F and B where $EF = EB$, $AF = 12$ cm, $TA = 5$ cm.



(i) Find the value of y .

[1+1+2]

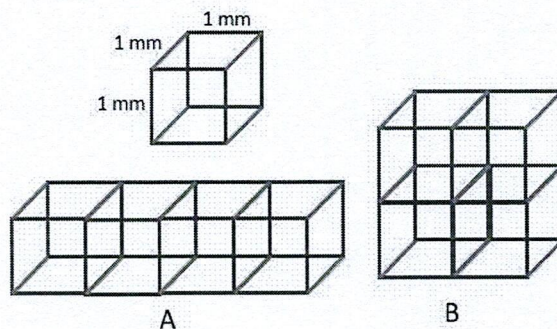
(ii) Find the value of $x + y$.

(iii) Find the length BT

OR

(iii) Find the perimeter of triangle BEF.

37. Two cuboids A and B are formed by joining cubes of dimensions $1\text{mm} \times 1\text{mm} \times 1\text{mm}$ as shown in the given figure.



(i) Find the total surface area of one cube.

[1+1+2]

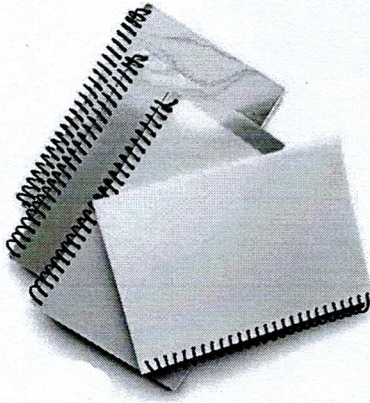
(ii) Find the dimensions (i.e. length, breadth and height) of the cuboid A .

(iii) Find the total surface area of the cuboid B.

OR

(iii) Find the volume of cuboid B.

38. The cost of a book is Rs. 25 and the cost of a note book is Rs.10.



- (i) Find the cost of 3, 4 and 5 books.
- (ii) Find the total cost of 10 books and 25 note books.
- (iii) Find the number of books that can be purchased with Rs. 500.

[1+1+2]

OR

- (iii) Find the number of books that can be purchased on the cost of 10 note books.
-



DELHI PUBLIC SCHOOL

SAIL TOWNSHIP, RANCHI

ANNUAL EXAMINATION (2024-25)

Class - VIII
Time - 90 Minutes

Subject - Sanskrit
Maximum Marks- 40

खण्ड – क

प्रश्न 1 अधोलिखितं गद्यांशं पठित्वा निर्देशानुसारम् प्रश्नानाम् उत्तराणि लिखत—

दीपावली शब्दे दीप+आवली शब्द द्वयम् अस्ति यस्य अर्थः दीपानाम् आवली अर्थात् दीपमालिकानां पंक्तिः वा । इदं पर्व प्रकाशस्य पर्व कथ्यते । अस्य संदेशः तमसो मा ज्योतिर्गमय इत्यस्ति । उत्सवेषु दीपावली प्रमुखः उत्सवः वर्तते ।

1. एकपदेन उत्तरत —

{1/2x2=1}

क. दीपावली कस्य पर्व कथ्यते?

ख. केषु दीपावली प्रमुखः उत्सवः वर्तते?

2. एकवाक्येन उत्तरत—

{1x2=2}

क. दीपावली शब्दस्य अर्थः किम्?

ख. अस्य संदेशः किम् अस्ति?

3. विकल्पेभ्यः उचितं उत्तरं चित्वा लिखत—

{1/2x4=2}

क. 'दीपानाम्' इति पदे का विभक्तिः प्रयुक्ता?

{अ} चतुर्थी {ब} पंचमी {स} षष्ठी {द} सप्तमी

ख. 'इदं प्रकाशस्य पर्व कथ्यते' — इति वाक्ये क्रियापदं किम्?

{अ} प्रकाशस्य {ब} कथ्यते {स} पर्व {द} इदम्

ग. 'अस्ति' इति पदे कः लकारः?

{अ} लट् {ब} लृट् {स} लङ् {द} लोट्

घ. 'दीपावली प्रमुखः उत्सवः वर्तते' — इति वाक्ये विशेषणपदं किम्?

{अ} उत्सवः {ब} प्रमुखः {स} दीपावली {द} वर्तते

प्रश्न 2 अधोलिखितं पद्यांशं पठित्वा प्रश्नानाम् उत्तराणि लिखत —

पापात् निवारयति योजयते हिताय,
गुह्यं निगूहति गुणान् प्रकटीकरोति ।
आपद्गतं न जहाति ददाति काले,
सन्मित्र—लक्ष्णमिदं प्रवदन्ति सन्तः ।।

1. एकपदेन उत्तरत -

{1/2x2=1}

क. सन्मित्रं कस्मात् निवारयति?

ख. सः कस्मै योजयते?

2. एकवाक्येन उत्तरत-

{1x2=2}

क. कः आपद्गतं न जहाति?

ख. सः कान् प्रकटीकरोति?

3. विकल्पेभ्यः उचितं उत्तरं चित्वा लिखत-

{1/2x4=2}

क. 'यच्छति' इति पदस्य किं पर्यायपदं अत्र प्रयुक्तम् ?

{अ} जहाति {ब} ददाति {स} निगूहति {द} हिताय

ख. 'प्रवदन्ति' इति क्रियापदस्य कर्तृपदं किम्?

{अ} सन्तः {ब} काले {स} योजयते {द} ददाति

ग. 'गुणान्' इति पदे का विभक्तिः प्रयुक्ता?

{अ} प्रथमा {ब} द्वितीया {स} तृतीया {द} षष्ठी

घ. 'योजयते' इति पदे कः लकारः?

{अ} लट् {ब} लृट् {स} लङ् {द} लोट्

खण्ड - ख

प्रश्न 3 रेखांकितपदानि आधृत्य प्रश्ननिर्माणं कुरुत-

{1x4=4}

क. करुणापराणां कायः परोपकारैः विभाति ।

ख. दुर्व्यसनानि सर्वथा त्याज्यानि ।

ग. गुणान् प्रकटीकरोति ।

घ. ऋषिः राजानम् अवदत् ।

प्रश्न 4 घटनाक्रमानुरेण वाक्यानि लिखत -

{1/2x4=2}

क. एकदा तस्य प्रासादं एकः मुनिः आगच्छत् ।

ख. तस्य नाम यशपालः आसीत् ।

ग. पुरा कस्मिंश्चित् देशे एकः नृपः प्रतिवसति स्म ।

घ. सः नृपाय वरम् अयच्छत् यत् तव स्पर्शेण सर्वं स्वर्णं भविष्यति ।

प्रश्न 5 अधोलिखितानां पदेषु धातुं उपसर्गं च पृथक् कुरुत -

{1/2x4=2}

पदानि	धातुः	उपसर्गः
क. विचिन्तयति	-----	-----
ख. प्रवदन्ति	-----	-----

प्रश्न 6 विलोमपदानि लिखत -

{1/2x4=2}

क. अधम : -	-----
ख. आगच्छतु : -	-----
ग. कुसंगति : -	-----
घ. जीवनम् : -	-----

'खण्ड - ग'

प्रश्न 7 मंजूषातः क्रियापदानि चित्वा रिक्तस्थानानि पूरयत -

{1/2x4=2}

वद, गायन्ति, पिबेत्, प्रणमामि

क. प्रतिदिनं वस्त्रपूतं जलं ----- ।
ख. प्रातः अहं पितरौ ----- ।
ग. देवाः गीतकानि ----- ।
घ. अनृतं मा ----- ।

प्रश्न 8 अधोलिखितानां पदानां विभक्तिं वचनं च लिखत -

{1/2x4=2}

पदानि	विभक्तिः	वचनम्
क. पर्वणाम्	-----	-----
ख. अस्मिन्	-----	-----

प्रश्न 9 संधिं/विच्छेदं कृत्वा लिखत -

{1/2x4=2}

क. धन + आगमनाय -	-----
ख. चतुः + दश -	-----
ग. यथेष्टम् -	----- + -----

प्रश्न 10 संस्कृते अनुवादं कुरुत -

{1x2=2}

क. आज ही मृत्यु हो ।
ख. मैं यहाँ नहीं रहता हूँ।

प्रश्न 11 रेखांकितपदानि शुद्धं कृत्वा लिखत -

{1/2x4=2}

- क. लोभेन क्रोधः प्रभवति ।
ख. गुरुः शिष्यं उपदेशं ददाति ।
ग. रामं रोचते ओदनम् ।
घ. रूपवान् स्त्री मधुरं गीतं गायति ।

प्रश्न 12 उचित धातुरूप प्रयोगेण वाक्यानि पूरयत -

{1/2x4=2}

- क. छात्रः शिक्षकं ----- । (नम् - लट्)
ख. अहं जलं ----- । (पा - लट्)
ग. बालकाः चित्राणि ----- । (दृश् - लोट्)
घ. जनाः सूर्यम् ----- । (नम् - लृट्)

प्रश्न 13 कोष्ठकगत पदेषु उचितं विभक्तिं प्रयुज्य लिखत -

{1/2x4=2}

- क. ----- नमः । (शिव)
ख. पिता ----- अलम् । (पुत्र)
ग. बालकः ----- बहिः गच्छति । (गृह)
घ. मृगः ----- बिभेति । (सिंह)

प्रश्न 14 उचितैः शब्दरूपैः रिक्तस्थानानि पूरयत -

{1/2x6=3}

- क. मत्या, -----,
ख. राजा, -----,
ग. कवये, -----,

प्रश्न 15 उचितैः धातुरूपैः रिक्तस्थानानि पूरयत -

{1/2x6=3}

- क. पश्यतु, -----,
ख. अपिबम्, -----,
ग. मोदते, -----,



DELHI PUBLIC SCHOOL

SAIL TOWNSHIP, RANCHI

ANNUAL EXAMINATION (2024-25)

Class - VIII
Time - 3 Hours

Subject - Science
Maximum Marks - 80

General Instruction:-

All questions are compulsory.

Marks are indicated against each question

PHYSICS

I. Multiple choice questions:

[1x6]

1. A force cannot change
 - (a) shape of an object
 - (b) speed of an object
 - (c) mass of an object
 - (d) both (a) and (b)
2. The direction of the friction is
 - (a) always opposite to the applied force
 - (b) sometimes opposite to the applied force
 - (c) always in the direction of applied force
 - (d) always perpendicular to the applied force
3. The pitch of a sound is determined by its
 - (a) amplitude
 - (b) frequency
 - (c) speed
 - (d) wavelength
4. The point on Earth's surface directly above the focus is called
 - (a) faultcentre
 - (b) focus
 - (c) epicentre
 - (d) surface-centre

Assertion and reason type question

- (a) Both Assertion and Reason are true and Reason is the correct explanation of the Assertion
- (b) Both Assertion and Reason are true and Reason is not the correct explanation of the Assertion
- (c) Assertion is true but Reason is false
- (d) Assertion is false but Reason is true
- (e) Both Assertion and Reason are false

5. **Assertion:** The object to be electroplated is made the anode

Reason: The free copper from the solution gets drawn to the electrode connected to the negative terminal of the battery

6. **Assertion:** The owl has a large number of cones and only a few rods

Reason: Cones help to see in dim light

II. Very short answer type question:

[2x2]

7. Name the forces acting on a plastic bucket containing water held above ground level in your hand. Why the forces acting on the bucket do not bring a change in its state of motion?

8. Give two examples each to show that friction is both a friend and a foe.

III. Short answer type question:

9. (i) Define frequency.

[1+2]

(ii) A pendulum oscillates 56 times in 7 seconds. Find its time period and frequency.

10. (i) In the electrolysis of water, near which electrode we observe hydrogen bubbles?

(ii) Write two uses of electroplating.

[1+2]

IV. Case based question

[1+1+1+1]

11. Pradeep took a glass rod and rubbed it with a silk cloth. He was surprised to see that it now attracted small pieces of paper kept near it.

(a) What is the type of charge acquired by the glass rod?

(b) What happens when a plastic straw rubbed with polythene is brought near the glass rod?

(c) Which device Pradeep can use to check if an object is charged?

(d) How the charge acquired by them different from the one in a wire when the bulb glows?

V. Activity based question :

[5x1]

12. Describe an activity with a suitable diagram to show dispersion of sunlight.

OR

Draw a neat diagram of a human eye and label ciliary muscle, iris, lens, cornea and retina in it.

CHEMISTRY

SECTION - A [1x8=8]

1. Atoms are neutral because it has equal number of

(a) electrons and protons

(b) protons and neutrons

(c) Neutrons and electrons

(d) Electrons, protons and neutrons

2. Which among the following will not produce carbon dioxide/ carbon monoxide along with heat and light energy:

1. candle

2. kerosene

3. hydrogen gas

4. sun

(a) all

(b) 1 and 4

(c) 3 and 4

(d) only 4

3. Solid, porous & black coloured product obtained from destructive distillation of coal is

(a) Charcoal

(b) Coke

(c) Coal tar

(d) Carbon black

4. Amalgam is an alloy of
- Copper and any other metal
 - iron and any other metal
 - Mercury and any other metal
 - Zinc and any other metal
5. Which among the following is a neutralisation reaction
- Acetic Acid + Sodium Bicarbonate \longrightarrow Sodium Acetate + water + carbon dioxide + energy
 - Copper sulphate + iron sulphate \longrightarrow copper + iron sulphate
 - Iron + water + oxygen \longrightarrow hydrated iron oxide + energy
 - Carbon + oxygen \longrightarrow carbon - di - oxide + energy
6. Can you burn a log of wood by bringing a lighted matchstick near it? Give reasons for your answer.
7. Give appropriate term for the following:
- formation of coal from dead remains of land vegetation
 - Purification & separation of different useful products of Petroleum
8. **Assertion (A):** All alkalis are bases but all bases are not alkalies
Reason (R): All bases are not soluble in water.
- Assertion and reason are correct and R is the correct explanation of A.
 - Both assertion and reason are correct but R is not the correct explanation of A.
 - A is a correct statement and R is incorrect statement
 - R is a correct statement and A is a wrong statement

SECTION - B [2 x 1 = 2]

9. (a) A student add dilute hydrochloric acid to lime water .Will the reaction mixture becomes hot or cold? Why?
 (b) Compare organic & inorganic acid. [1+1]

OR

A white shirt has a yellow stain of curry. When soap is rubbed on this shirt during washing, the yellow stain turns red. On rinsing the shirt with plenty of water, the red stain turns yellow again .

- Name the natural indicator present in curry stain.
- What is the nature of soap (acidic or basic) as shown by the indicator present in curry stain ?
- Name a synthetic indicator which will give pink colour with soap solution.
- What will be the colour of soap with methyl orange? [0.5 x 4 = 2]

SECTION - C [3X2=6]

10. (a) What is reactivity series?
 (b) On the basis of it, explain why copper do not react with sulphuric acid where as zinc react with sulphuric acid and release hydrogen gas.
11. (a) LPG & CNG both are fossil fuels but still considered as eco friendly fuel whereas wood though not a fossil fuel still considered as a threat to environment. Comment.
 (b) What is the full form of PCRA.

SECTION - D [4x1= 4]

12. A fire broke out in a factory, and firefighters used carbon dioxide extinguishers to put out the flames. The factory contained large amounts of paper and some electrical equipment.
- (a) Why is water not suitable for extinguishing fires involving electrical equipment?
 - (b) How does carbon dioxide help in extinguishing fires?
 - (c) What are inflammable material? Give two examples of it.

OR

- (c) Write the chemical equation taking place in soda acid fire extinguisher.

SECTION - E [5x1= 5]

13. (a) Which zone of the candle flame is called luminous zone and why?
(b) Write an activity to show that it contains unburnt carbon particles.
(c) Why does a goldsmith blow air into kerosene lamp flame with a blow pipe?

OR

- (a) State any two differences between carbon di oxide and carbon monoxide.
- (b) Which is more harmful and why?
- (c) Draw a well labelled diagram of soda acid fire extinguisher.

[2+1+2]

BIOLOGY
SECTION -A

1. Select the incorrect match. [1]
- (a) Fertilizer- Ammonium sulphate
 - (b) Storage of grains-Silos and granaries
 - (c) Weedicide - Potash
 - (d) Kharif crops- Soyabean
2. Vidhi observed that fishes were coated with salt and kept in tray in the fish market. What is the likely use of coating fish with salt? [1]
- (a) It increases the moisture content of the fish allowing it to survive longer.
 - (b) It stops the growth of bacteria by reducing the moisture content.
 - (c) It decreases the salt content of the fish that enhances its taste.
 - (d) It enhances the weight of the fish making the transport easier.
3. Which of the following changes may occur due to desertification? [1]
- (a) Decrease in atmospheric temperature.
 - (b) Increase in water holding capacity of soil.
 - (c) Decreased chances of floods.
 - (d) Conversion of fertile land into a desert.
4. Why does the process by which hydra reproduce is considered as an asexual mode of reproduction? [1]
- (a) The process gives rise to a young hydra different from its parent.
 - (b) The process involves the separation of young hydra from its parent.
 - (c) The process requires opposite sexes of hydra to interact with each other.
 - (d) The process requires just one parent hydra to give birth to a young hydra.

5. How can a normal person get HIV infection if he is habitual to take drugs? [1]
- By sharing food with a person who takes drugs.
 - By sharing the syringe with an infected person to inject drugs.
 - By sharing a common place with an infected person.
 - By touching an infected person.
6. Consider the following statements and select the option which correctly identifies true (T) and false (F) ones. [1]
- Anthrax is a bacterial disease that affects humans and cattle.
 - Foot and mouth disease of cattle is caused by a fungus.
 - Penicillium is a bacterium used to obtain antibiotic.
 - Yellow vein mosaic is a viral disease that affects okra.
- | | (i) | (ii) | (iii) | (iv) |
|-----|-----|------|-------|------|
| (a) | T | F | T | F |
| (b) | T | T | T | F |
| (c) | T | F | F | T |
| (d) | T | F | T | T |
7. The Red Data Book gives an account of [1]
- extinct plants and animals
 - endemic animals only
 - endangered plants and animals
 - All of the above

For Q.no- 8 and 9, two statements are given. One labelled assertion (A) and the other labelled Reason (R). Select the correct answers to these questions from the codes (a), (b), (c) and (d) as given below.

- Both Assertion (A) and Reason (R) are true, and Reason (R) is the correct explanation of Assertion (A).
 - Both Assertion (A) and Reason (R) are true, but Reason (R) is **not** the correct explanation of Assertion (A).
 - Assertion (A) is true, but Reason (R) is false.
 - Assertion (A) is false, but Reason (R) is true.
8. **Assertion (A)** - Amoeba reproduces by binary fission. [1]
Reason (R) - All unicellular organisms reproduce by sexual reproduction.
9. **Assertion (A)** - There are 23 pairs of sex chromosomes in a human body. [1]
Reason (R) - Chromosomes are thread-like structures present in the nucleus of a cell.

SECTION - B

10. (a) Polio drops are not given to children suffering from diarrhoea. Why? [1+1=2]
 (b) Write the causative agent and the mode of transmission of tuberculosis.
- OR**
- Why does curd set faster in summer than in winter? [1+1=2]
 - Why are antibiotics not effective against common cold and flu?
11. (a) The introduction of a new species to a habitat has a negative impact on the biodiversity of that region. Comment on the statement. [1+1=2]
 (b) Mention the aim of the 'Forest Conservation Act' in India.

12. Draw a neat diagram of a mammalian sperm and label the following parts:

[2]

- (i) The part that contains nucleus
- (ii) The part that helps in locomotion
- (iii) The middle part

SECTION - C

13. (a) Farmers normally use a combination of manures and fertilizers in their fields. Give scientific reason for this statement.

(b) How does burning of stubs effect the environment and human health?

(c) State one advantage of the process of transplantation in growing crops.

[1+1+1=3]

14. (a) In human females, each time during maturation and release of egg, the inner wall of uterus thickens. Is this thickening permanent? Justify your answer with a proper reason.

(b) Why do tadpoles growing in iodine deficient water fails to achieve their transformation into adult frogs?

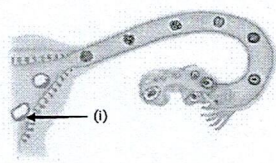
(c) Draw a schematic diagram to show that the sex of a child is determined by the sex chromosomes they inherit from their father not their mother.

[1+1+1=3]

SECTION - D

15. Observe the following figures related to sexual reproduction in human beings and answer the questions that follow:

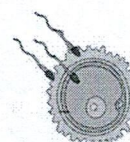
[2+2+1=5]



(A)



(B)



(C)

(a) Identify the stages (A), (B), and (C) during development of a human baby and arrange the stages in correct sequence of development.

(b) Why are not all animals oviparous? Does being viviparous offer any advantage to organisms? Give a reason to validate your answer.

(c) Name and define the stage marked as (i) in Figure (A)

OR

(a) What is metamorphosis? Why the term metamorphosis is not used while describing human development?

(b) Mention a functional difference between ovary and oviduct. Why do testes in males produce millions of sperms at a time but in females only a single ovum is released in a month?

(c) Female frogs lay unfertilized eggs but hens lay fertilized eggs. Comment on the statement.

SECTION - E

Q.no 16 is a case - based/ data-based question with 2 to 3 short sub- parts. Internal choice is provided in one of these sub parts.

[2+1+1=4]

16. The changes associated with puberty are under the influence of certain chemical substances produced in our body. These chemicals are known as the hormones and the organs secreting them are known as endocrine glands. Endocrine glands include thyroid gland, adrenal gland, testes etc.

(a) Both enzymes and hormones are secretions of certain glands or glandular organs. How are these glands different from each other? (Give two points)

OR

(a) Why is pituitary known as the master gland? Mention the role of testosterone in boys during adolescence.

(b) What is the role of pancreas in a diabetic patient?

(c) Why adrenaline is commonly called the triple-F hormone?



DELHI PUBLIC SCHOOL

SAIL TOWNSHIP, RANCHI

ANNUAL EXAMINATION (2024-25)

Class - VIII
Time - 3 Hours

Subject - Social Science
Maximum Marks - 80

General Instruction:-

- All questions are compulsory.
- Marks are indicated against each question.
- There is no overall choice in the question paper. However, an internal choice has been provided in few questions. Only of the choices in such questions have to be attempted
- Question No. VI of Geography is map based.

HISTORY

A. Choose the correct option:

[1×6=6]

1. A heavy gun used by infantry soldiers was called -
 - (a) Musket
 - (b) Matchlock
 - (c) Mercantile
 - (d) None of these
2. A term used in Madhya Pradesh for shifting cultivation-
 - (a) Mahua
 - (b) Bewar
 - (c) Sleeper
 - (d) None of these
3. The persons with a scholarly knowledge of the language and culture of Asia were called-
 - (a) Orientalists
 - (b) Munshi
 - (c) Vernacular
 - (d) None of these
4. The Court of Directors of the East India Company in London sent Woods Despatch in the year-
 - (a) 1857
 - (b) 1856
 - (c) 1854
 - (d) None of these
5. He was the adopted son of late Peshwa Bajirao II
 - (a) Tantia Tope
 - (b) Nana Saheb
 - (c) Kunwar Singh
 - (d) None of these

6. Who was asked by Robert Clive to produce maps of Hindustan?

- (a) James Mill
- (b) William Jones
- (c) James Rennel
- (d) none of these

B. Answer the following questions in brief:-

[2×2=4]

1. How did the British succeed in securing the submission of the Rebel land owners of Awadh?
2. What were the problems with the new Monroe system of fixing revenue?

C. Answer the following questions:-

[3×3=9]

1. What were the circumstances which led to the eventual collapse of Indigo production in Bengal?
2. What was Lord Macaulay 's contribution to the system of education in India?
3. What economic impact did the first world war have on India?

D. Answer in detail:-

[5]

- (a) When and why was non-cooperation movement launched? [1+1]
- (b) Discuss the various forms that non-cooperation movement took in different parts of India. [3]

OR

- (a) Discuss those developments of 1937 to 47 period that led to the creation of Pakistan?

E. Read the given passage and answer the following questions:-

[4]

People such as Raja Ram Mohun Roy felt that changes were necessary in society and unjust practices need to be done away with. They thought that the best way to ensure the changes was by persuading people to give up all practices and adopt a new way of life. He founded a reform association in Calcutta. He was keen to spread the knowledge of Western education in the country and bring about greater freedom and equality for women. He wrote about the way women were forced to bear the burden of domestic work confined to the home and the kitchen and not allowed to move out and become educated. He was particularly moved by the problems widows faced in their lives. He began a campaign against the practice of sati.

1. Which association was founded by Raja Ram Mohun Roy in Calcutta? [1]
2. In which year the practice of sati was banned? [1]
3. List two things that Raja Ram Mohun Roy wanted to do as a social reformer? [2]

CIVICS

A. Choose the correct option:

[1×5=5]

1. It refers to the money given to make amendments for an injury or a loss-
(a) compensation (b) acquisition (c) eviction (d) none of these
2. A condition in which a state does not officially promote any one religion as the state religion:-
(a) Secularism
(b) Federalism
(c) Separation of powers
(d) None of these

3. A term that refers to a temporary alliance of groups or parties-

- (a) Coalition
- (b) Arbitrary
- (c) Tyranny
- (d) None of these

4. A graded system or arrangement of persons or things is called-

- (a) Malnourished
- (b) Hierarchy
- (c) Coalition
- (d) None of these

5. This word means to exclude or banish an individual or a group-

- (a) Ostracise
- (b) Dispossessed
- (c) Confront
- (d) None of these

B. Answer the following questions in brief:-

[2×2=4]

1. What would happen if there were no restrictions on the power of elected representatives?
2. Why is it important that one religious community does not dominate another?

C. Answer the following questions

[3×2=6]

1. "Right to livelihood is a part of Right to life". Justify this statement in your own words.
2. Why was Sachar Committee constituted and what were some of its recommendations? [1+2]

D. Answer the following questions in detail:-

[5]

- (a) "A clean environment is a public facility". Explain this statement. [2]
- (b) Why are companies and contractors able to violate environment laws? [2]
- (c) Suggest one way in which environment can be protected? [1]

OR

- (a) What are the advantages to foreign companies in setting up production in India? [3]
- (b) In what ways were the enforcement of safety laws lacking in the case of UC plant in Bhopal? [2]

E. Read the following passage and answer the questions:-

[4]

The Scheduled Castes and the Scheduled Tribes (Prevention of Atrocities) Act, distinguishes several levels of crimes. Firstly it lists modes of humiliation that are both physically horrific and morally reprehensible and seeks to punish those who force a member of Scheduled Caste or a Scheduled Tribe to drink or eat any inedible or obnoxious substance and other similar acts which is derogatory to human dignity. Secondly it lists actions that dispossess dalits and adivasis of their meagre resources or which force them into performing slave labour. So it also sets out to punish anyone who wrongfully occupies or cultivates any land owned by or allotted to a member of Scheduled Caste or Scheduled Tribe or gets the land allotted to him transferred. It seeks to punish those also who assault or use force on any woman belonging to Scheduled Caste or Scheduled Tribe with intent to dishonour her.

1. When was the Scheduled Castes and the Scheduled Tribes (Prevention of Atrocities) Act passed? [1]
2. What do you mean by the phrase "morally reprehensible"? [1]
3. Whom does this law seek to punish? [2]

GEOGRAPHY

I. Answer the following questions :

[1x6=6]

1. Fill in the blanks :

Name of the Crop	Climatic conditions
i. ____? ____	It requires cool climate and well distributed high rainfall throughout the year for the growth of its tender leaves.
ii. ____? ____	It requires high temperature light rainfall, two hundred and ten frost-free days and bright sunshine for its growth.

Options :

- (a) i. Coffee ii. Mize
 (b) i. Tea ii. Cotton
 (c) i. Rice ii. Wheat
 (d) i. Jute ii. Millets
2. Which of the following option is correct regarding agricultural terms :
- (a) Sericulture - Commercial rearing of silk worms.
 (b) Pisciculture - Cultivation of grapes.
 (c) Viticulture - Growing vegetables, flowers and fruits for commercial use.
 (d) Horticulture - Breeding of fish in specially constructed tanks and ponds.
3. Arrange the following procedure of cotton textile industry as per sequence.
- (i) Weaving.
 (ii) Ginning.
 (iii) Dyeing.
 (iv) Spinning.
- OPTIONS.**
- (a) ii,iv,i,iii.
 (b) i,iv,iii,ii.
 (c) iii,i,iv,ii.
 (d) iv,ii,iii,i.
4. What was the impact of the iron and steel industry development in the initial years of India?
- (a) It opened the door to rapid industrial development and economic growth in India
 (b) It created unemployment in India
 (c) India lagged behind in competition with other countries.
 (d) All of the above
5. Match the Columns and choose the correct option :

Column I	Column II
A. Life expectancy	i. It refers to the structure of the population.
B. Population composition	ii. It is the number of people living in a unit area.
C. Natural growth rate	iii. The difference between the birth rate and death rate of a country
D. Population density	iv. It is the numbers of years that an average person can expect to live.

Options:

- | | A | B | C | D |
|-----|-----|----|-----|----|
| (a) | iii | ii | i | iv |
| (b) | iv | i | iii | ii |
| (c) | iii | i | iv | ii |
| (d) | iv | ii | iii | i |

6. If a country's population pyramid has a uniform shape across all age groups, what does this typically indicate?

- (a) High birth rates and high death rates.
- (b) Balanced birth and death rates.
- (c) High birth rates and low death rates.
- (d) Low birth rates and high death rates.

II. Answer the following questions in very short :

[2x2=4]

- 1. Highlight four major threats to the plants and animals.
- 2. How can agricultural development be achieved?

III. Answer the following questions in short :

[3x2=6]

- 1. Explain any three major vegetation types of the world.
- 2. Write any three features of Plantation agriculture.

IV. Answer the following questions in detail :

[5]

- 1. Describe five risk reduction measures of Industrial Disaster.

OR

"Steel is often called the backbone of modern industry" - Explain the statement.

V. Read the source given below and answer the questions that follow.

[4]

Value means worth. Some resources have economic value, some do not. For example, metals may have an economic value, a beautiful landscape may not. But both are important and satisfy human needs. Some resources can become economically valuable with time. Your grandmother's home remedies have no commercial value today. But if they are patented and sold by a medical firm tomorrow, they could become economically valuable. Time and technology are two important factors that can change substances into resources. Both are related to the needs of the people. People themselves are the most important resource. It is their ideas, knowledge, inventions and discoveries that lead to the creation of more resources. Each discovery or invention leads to many others. The discovery of fire led to the practice of cooking and other processes while the invention of the wheel ultimately resulted in development of newer modes of transport. The technology to create hydroelectricity has turned energy in fast flowing water into an important resource.

(i) Name two important factors that can change substances into resources?

[1]

(ii) How would you define the term "Technology"?

[1]

(iii) What makes human beings a special resource?

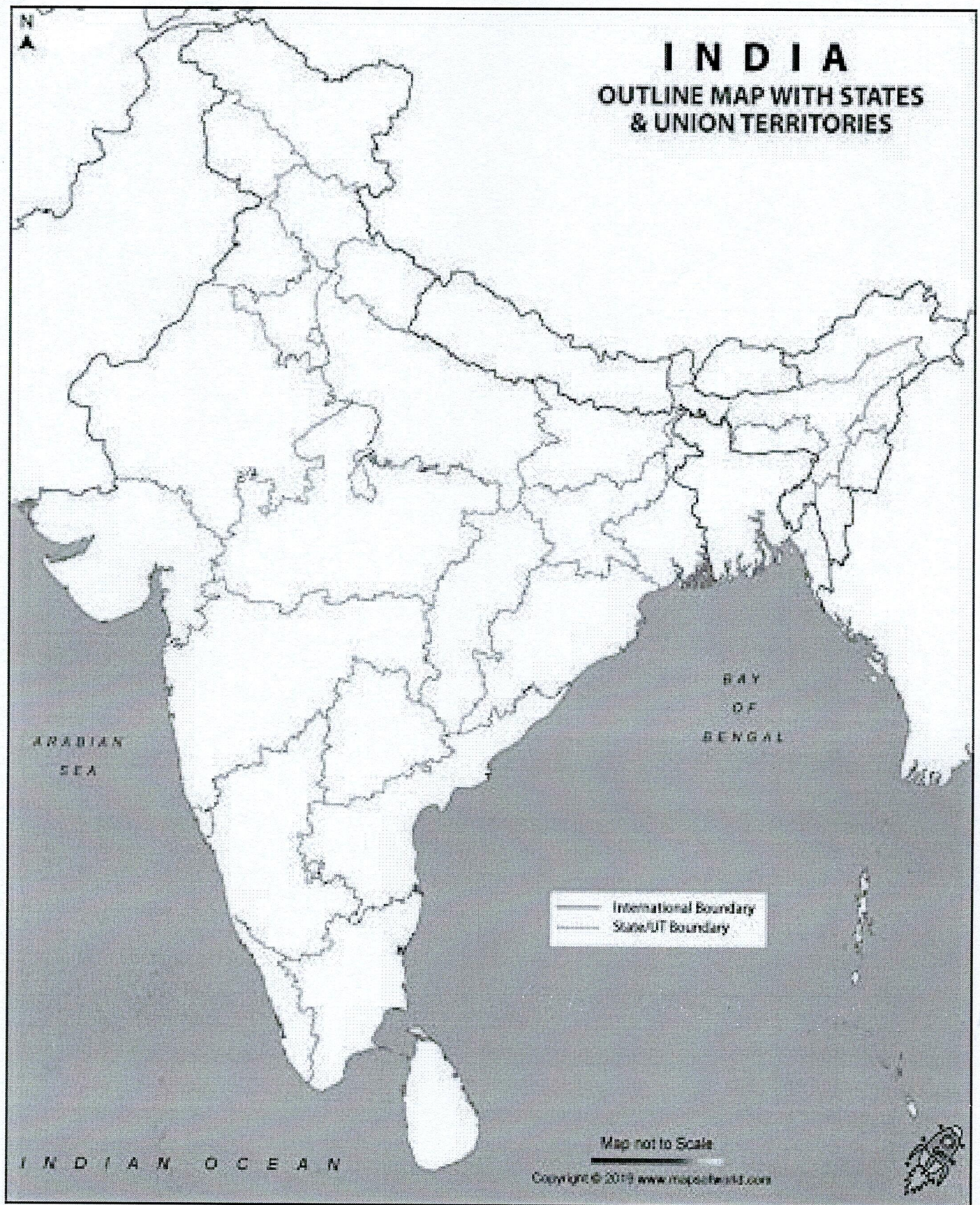
[2]

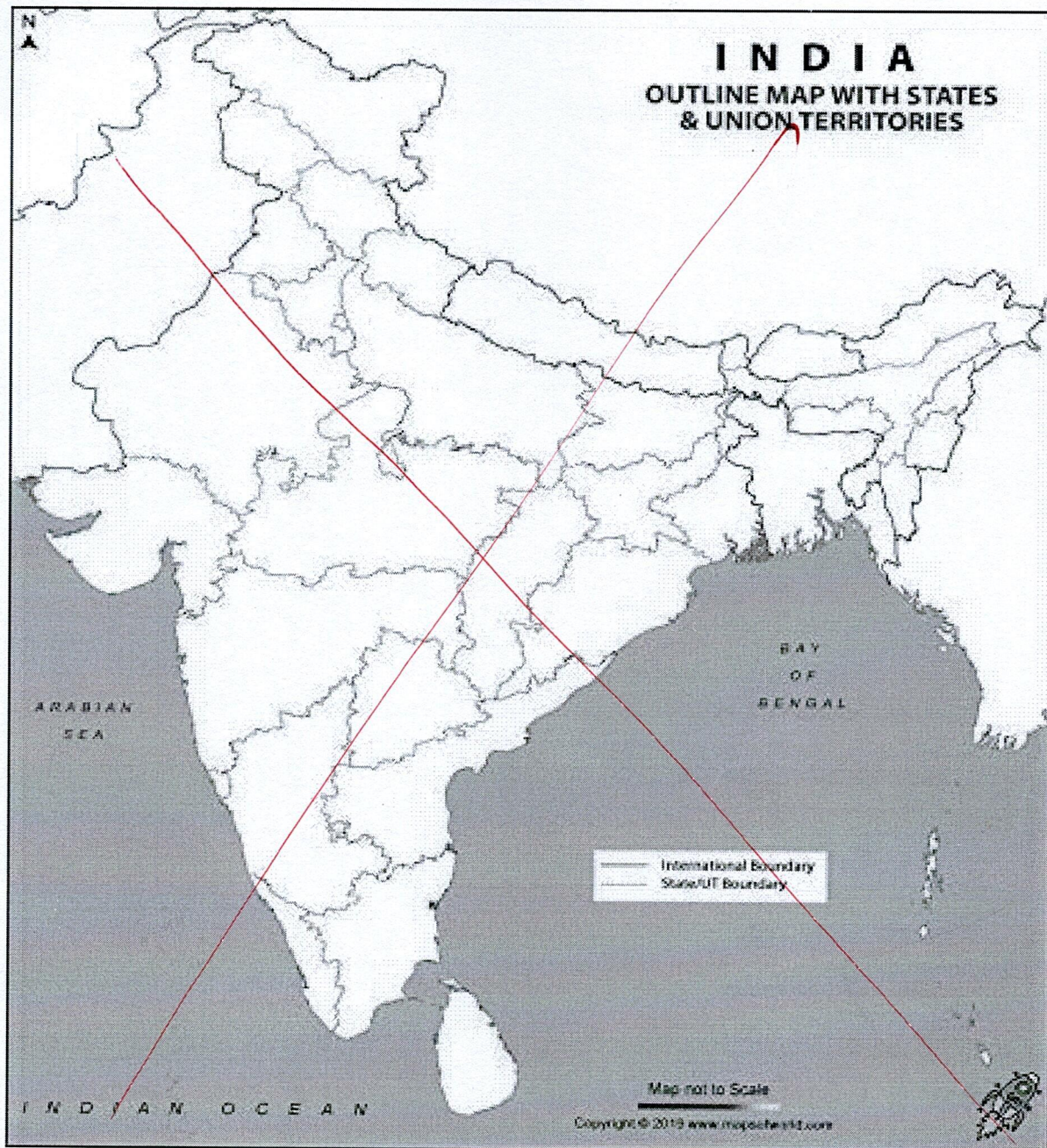
VI. Locate and label the following on the Political Map of India:

[1x3=3]

- 1. Jamshedpur - Iron and Steel Plant.
- 2. Salem - Iron and Steel Plant.
- 3. Lowest populated state of India.

GEOGRAPHY







DELHI PUBLIC SCHOOL

SAIL TOWNSHIP, RANCHI

ANNUAL EXAMINATION (2024-25)

Class - VIII
Time - 90 Minutes

Subject - Spanish
Maximum Marks- 40

General instructions

- Write answers in sentences along with questions.
- Write questions with question number.
- Full marks will be given when answered correctly in sentence.
- Don't only write keywords in Fill in the blanks.

Part- A (Reading & Writing)

1. Comprensión :

- A. El 13 de octubre de 2005 se vio en España un eclipse anular. Desde las 9.30 hasta las 12:30 de ese día, el Planetario de Madrid ofreció a los asistentes la posibilidad de observar el eclipse en una pantalla conectada al telescopio de su observatorio. Desde allí se pudo observar el fenómeno. Durante el siglo XXI, tendremos la oportunidad de ver tres eclipses más en 2026, 2027 y 2028, serán totales los dos primeros y anular el último. Ninguna de las líneas centrales de los tres eclipses pasará por Madrid, pero sí se verán perfectamente en Sevilla, Zaragoza o Valencia.
- B. Los eclipses de Sol se producen cuando, visto desde la Tierra, nuestro satélite la luna tapa el Sol. Estos eclipses, pueden ser totales, anulares o parciales. En un eclipse total, la Luna oculta por completo el Sol. En un eclipse parcial parte del disco de nuestra estrella queda oculta tras la Luna. En un eclipse anular la Luna queda colocada delante del centro del Sol.
- C. Recordamos a nuestros jóvenes astrónomos que hay que mirar el Sol con gafas especiales. Es muy peligroso y puede producir daño en el ojo, incluso ceguera.

Contesta a las preguntas abajos:

[5]

- ¿Qué es un eclipse?
- ¿Cómo se puede ver el eclipse sin peligro?
- ¿Cuándo se vio el eclipse anular en España última vez y cuándo verán otros tres que vendrán?
- ¿Qué pasará si vemos el eclipse con los ojos desnudos sin gafas especiales?
- ¿En cuáles ciudades de España se verán los tres eclipses que aparecerán en futuro?

2. Contesta a las preguntas siguientes de Empezamos:

[5]

- ¿Qué película irán a ver los chicos?
- ¿Dónde irás el próximo fin de semana?
- ¿Se puede fumar en el lugar público?
- ¿En cuál moneda (currency) tendrás que pagar (pay) si compras algo en España?
- ¿Qué pasará si estudiamos mucho?

3. **Contesta a las preguntas prácticas:**

[2.5×2=5]

- a. ¿Prefieres ir al cine o ver películas en casa? Explicalo en cinco frases.
- b. ¿Qué hacías cuando eras niño? Escríbelo en cinco frases como mínimo.

Part- B (Gramatica)

4. **Completa con el verbo en futuro.**

[2]

- a. El profesor..... (dar) las notas del examen mañana.
- b. La semana que viene (nosotros, ir) a la feria del libro.
- c. Mañana (hacer) frío por la mañana.
- d. En el próximo sorteo de lotería (tener) suerte y (decir) adiós al trabajo.

5. **Expresa la necesidad con 'necesitar' y 'hacer falta'**

[2]

- a. Yo una mochila grande para llevar a la escuela.
- b. A estos niños jardín de infantes.
- c. A mi los diccionarios de inglés y español.
- d. Mi padre una gafa de sol.

6. **Llena los huecos con los futuros irregulares:**

[3]

- a. Todos los niños.....(tener) comida.
- b. Nadie (hacer) daño a los animales.
- c. Los exámenes siempre (salir) bien.
- d. Nadie se (poner) enfermo.
- e. Las personas no(decir) mentiras.

7. **Haz 5 frases con la expresión de 'está prohibido' y 'no se puede':**

[3]

8. **Completa las frases con oraciones condicionales (si+verbo presente, oración principal presente/Imperativo)**

[4]

- a. Puedes comer un bocadillo si (tener) hambre.
- b. Si apruebas el examen, te (dejar) ir de excursión.
- c. Si llueve, te (mojar)
- d. Si quieres mejorar el vocabulario, (comprar) un diccionario.

9. **Forma frases dando o negando el permiso:**

[2]

- a. Profesor + alumnos + gritar en la clase.
- b. Mis padres + yo + salir por la noche.
- c. Mi profesor + yo + leer los párrafos en español.
- d. Mi padre + yo + jugar en el parque después de mis tareas.

10. **Completa las frases con oraciones condicionales (presente + futuro)**

[4]

- a. Si rompo el cristal (sonar) la alarma.
- b. Si ganas torneo de ajedrez (ser) el campeón.
- c. Si vamos al zoo (ver) muchos animales.
- d. Si congelas agua (convertirse) en hielo.

Part- C (Conjugation)

11. **Haz conjugación de los verbos abajos:**

[5]

- a. Hablar, hacer - (futuro simple)
- b. Estar, tener, hacer - (pretérito indefinido)